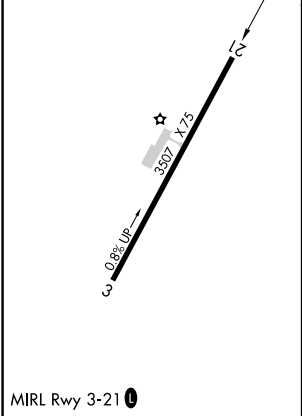
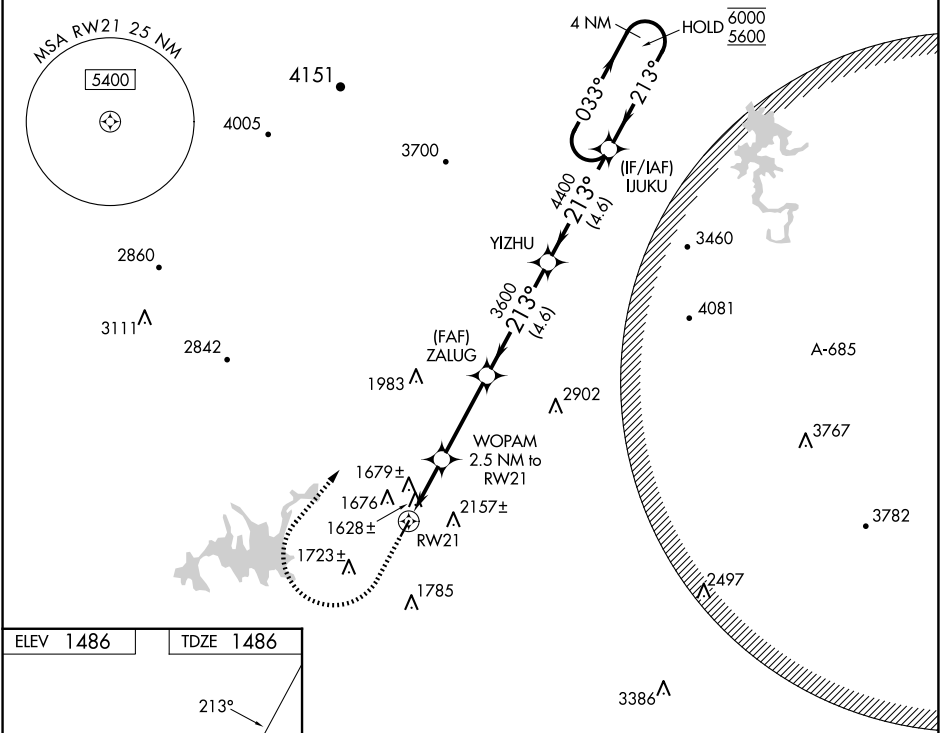


WAAS CH 86641 W21A	APP CRS 213°	Rwy Ldg TDZE Apt Elev	3507 1486 1486
--	------------------------	-----------------------------	---

RNAV (GPS) RWY 21

GILMER COUNTY (49A)

RNP APCH - GPS.		MISSED APPROACH: Climb to 2500 then climbing right turn to 5700 direct IJUKU and hold, continue climb-in-hold to 5700.
<div><div></div><div></div></div>	Procedure NA at night. Rwy 21 helicopter visibility reduction below 1 SM NA.	
AWOS-3 118.075	ATLANTA CENTER 133.1 342.425	UNICOM 123.0 (CTAF)



Visual Segment - Obstacles.		IJUKU 4 NM Holding Pattern	
2500	5700	IJUKU	
WOPAM 2.5 NM to RW21		ZALUG	YIZHU
RW21		2400	3600
2.5 NM		3.4 NM	4.6 NM
CATEGORY	A	B	C
LP MDA	1880-1	394 (400-1)	1880-1 $\frac{1}{8}$
LNAV MDA	1940-1	454 (500-1)	1940-1 $\frac{3}{8}$
CIRCLING	1980-1	2560-1 $\frac{1}{2}$	2560-3