

APP CRS	Rwy Idg	5005
168°	TDZE	389
	Apt Elev	389

RNAV (GPS) RWY 17

TURNER COUNTY (75J)

▼

▲ NA

Rwy 17 helicopter visibility reduction below 1 SM NA.

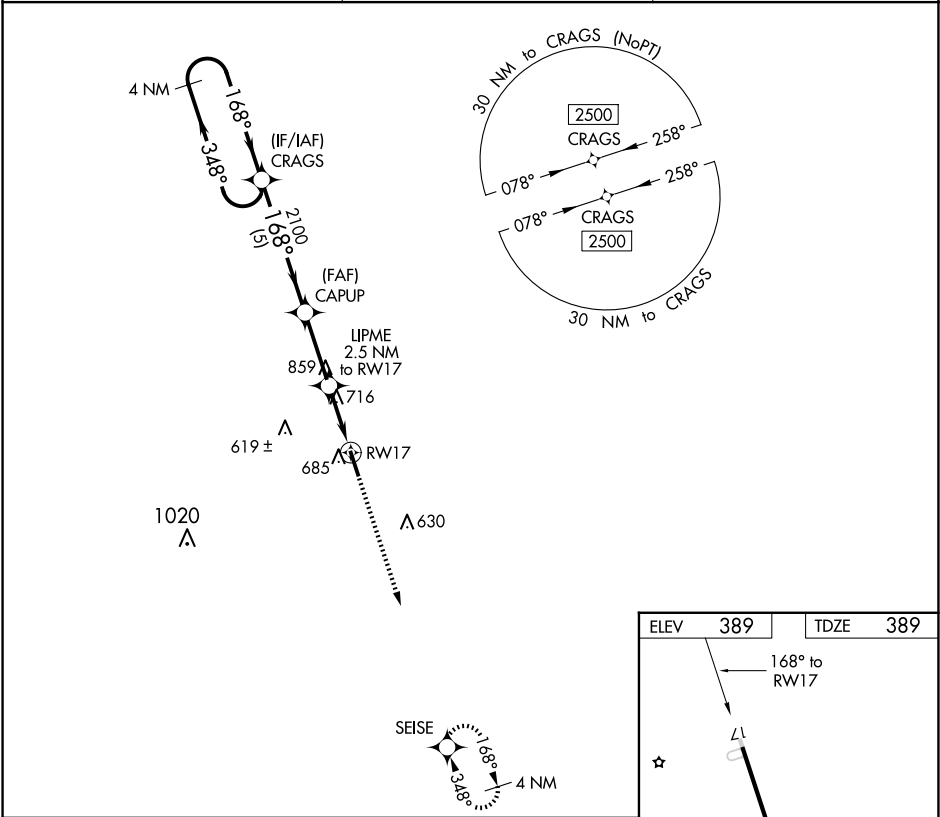
DME/DME RNP-0.3 NA.

When Fitzgerald altimeter setting not received, procedure NA.

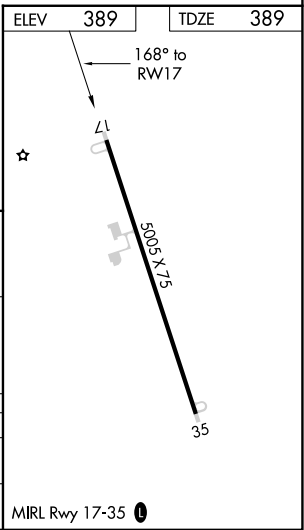
Procedure NA at night.

MISSED APPROACH: Climb to 2500
direct SEISE and hold.

FZG AWOS-3 118.625	JACKSONVILLE CENTER 125.75 363.075	UNICOM 122.7 (CTAF) 0
-----------------------	---------------------------------------	--------------------------



4 NM Holding Pattern		Visual Segment - Obstacles.		2500	SEISE
CATEGORY	A	B	C	D	
LNAV MDA	1080-1	691 (700-1)	1080-2	691 (700-2)	
CIRCLING	1100-1	711 (800-1)	1140-2¼ 751 (800-2¼)	1260-2¾ 871 (900-2¾)	



SE-4, 10 JUL 2025 to 07 AUG 2025

SE-4, 10 JUL 2025 to 07 AUG 2025