

APP CRS
235°

Rwy Idg
TDZE
Apt Elev

4795
1270
1270

RNAV (GPS) RWY 23
HOLLEY MOUNTAIN AIRPARK (2A2)

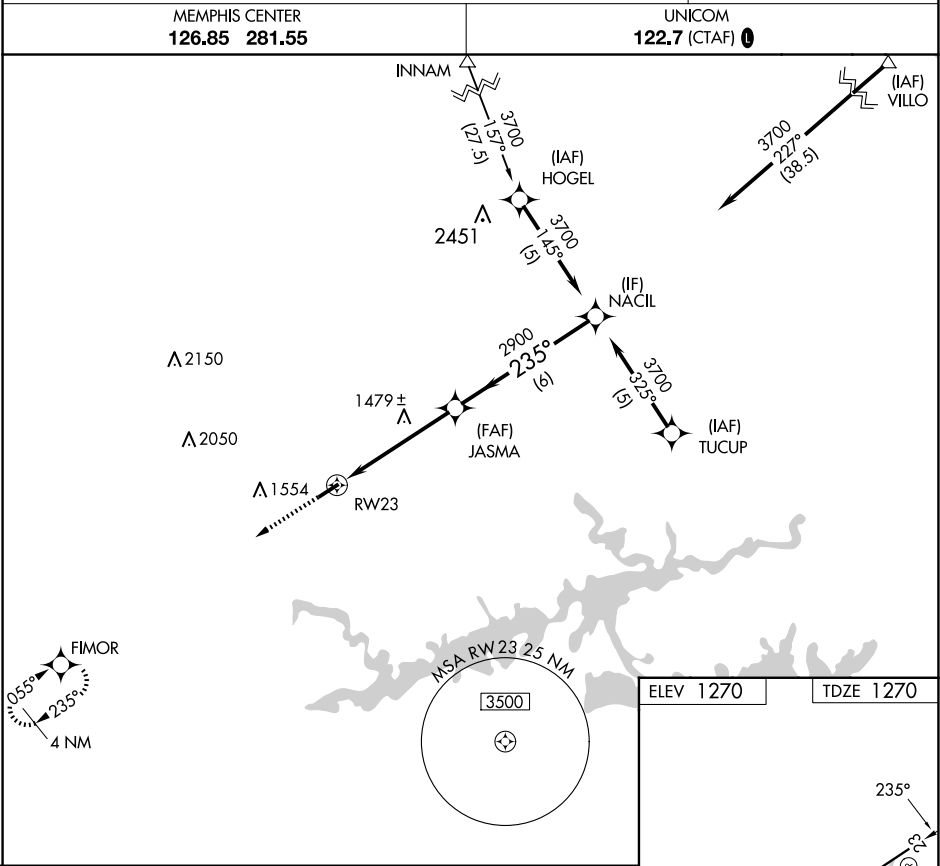
RNP APCH - GPS.

▼

NA

Rwy 23 helicopter visibility reduction below ¾ SM NA. Obtain local altimeter setting on CTAF; when not received, use Marion County Rgnl altimeter setting and increase all MDAs 180 feet and LNAV visibility Cat C ½ SM, and Circling Cat C visibility ¾ SM. Circling Rwy 5 NA at night. VDP NA when using Marion County Rgnl altimeter setting.

MISSED APPROACH: Climb to 3700 direct FIMOR and hold.



3700 FIMOR

NACIL

JASMA

RW23

1.4 NM to RW23

2900

3700

235°

2.99°

TCH 46

1.4

3.7 NM

6 NM

CATEGORY	A	B	C	D
LNAV MDA	1740-1	470 (500-1)	1740-1 ⅜ 470 (500-1 ⅜)	NA
CIRCLING	1800-1	530 (600-1)	1860-1 ½ 590 (600-1 ½)	NA

MIRL Rwy 5-23 0
REIL Rwy 5 and 23 0