

WAAS CH 40131 W05A	APP CRS 050°	Rwy Idg TDZE 584 Apt Elev 584
--	------------------------	---

RNAV (GPS) RWY 5

PRINCETON-CALDWELL COUNTY (2MØ)

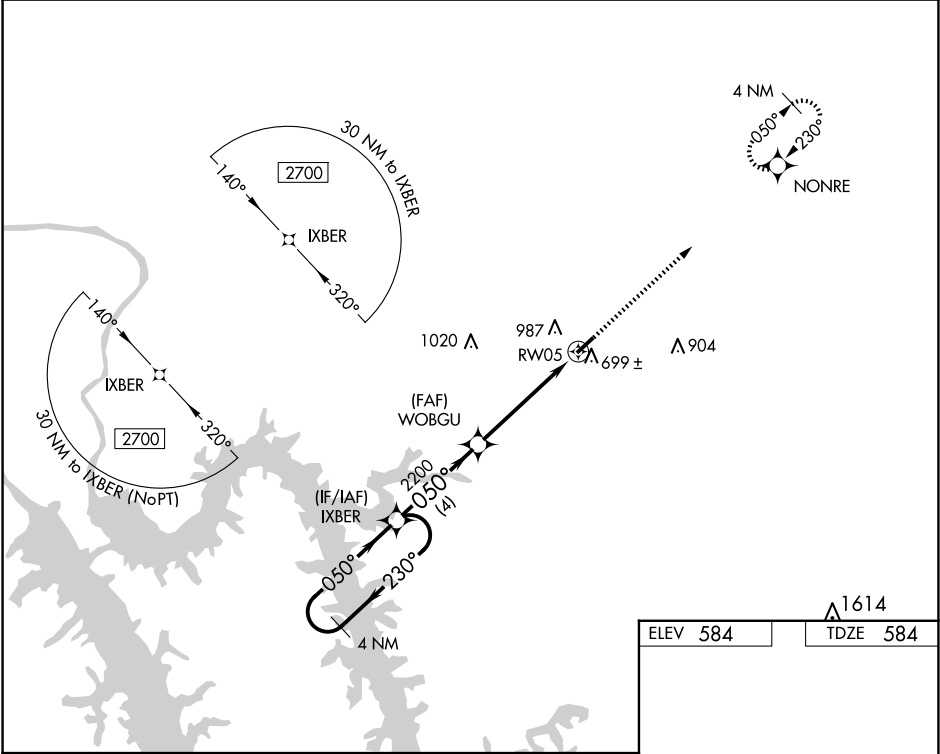
▼

NA

Baro-VNAV NA. Use Campbell AAF (Fort Campbell) altimeter setting; when not received, use Madisonville Rgnl altimeter setting and increase all DA 6 feet and all MDA 20 feet. Increase LPV all Cats visibility 1/8 mile. DME/DME RNP-0.3 NA. Helicopter visibility reduction below 3/4 SM NA.

MISSED APPROACH:
Climb to 2700 direct
NONRE and hold.

CAMPBELL APP CON 118.1 269.525	UNICOM 122.8 (CTAF) Ø
--	---------------------------------



4 NM Holding Pattern		VGSI and RNAV glidepath not coincident (VGSI Angle 3.25/TCH 29).		2700	NONRE
IXBER		WOBGU		2200	RW05
GP 3.00° TCH 53		4 NM		4.9 NM	
CATEGORY	A	B	C	D	
LPV DA	909-1	325 (400-1)		NA	
LNAV/VNAV DA	936-1 1/8	352 (400-1 1/8)		NA	
LNAV MDA	1040-1	456 (500-1)		NA	
CIRCLING	1420-1 1/4	836 (900-1 1/4)		NA	

MIRL Rwy 5-23 Ø

REIL Rwy 5 and 23 Ø