

LOUISVILLE, GEORGIA

AL-9837 (FAA)

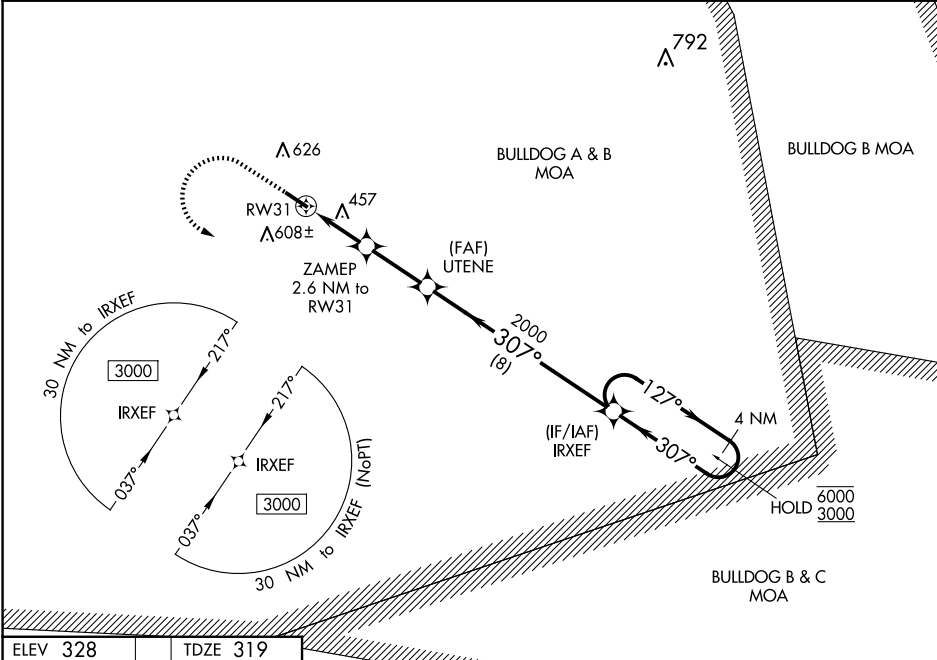
24193

WAAS CH 90439 W31A	APP CRS 307°	Rwy Idg TDZE Apt Elev	5002 319 328
--	------------------------	-----------------------------	---

RNAV (GPS) RWY 31
LOUISVILLE MUNI (2J3)

RNP APCH - GPS. ⚠ For uncompensated Baro-VNAV systems, LNAV/VNAV NA below -15°C or above 54°C.	MISSED APPROACH: Climb to 1000 then climbing left turn to 3000 direct IRXEF and hold.
---	---

AWOS-3PT 119.35	AUGUSTA APP CON 126.8 270.3	CTAF 122.9 0
---------------------------	---------------------------------------	------------------------



ELEV 328	TDZE 319	1000 3000 IRXEF ↑ ↶ ✧ VGSi and RNAV glidepath not coincident (VGSi Angle 3.65/TCH 27).			
		UTENE ZAMEP 2.6 NM to RW31 RW31 1 NM to RW31 1160 2000 2000 GP 3.00° TCH 45			
		CATEGORY A B C D			
LPV DA		569-1 250 (300-1)			
LNAV/VNAV DA		720-1½ 401 (400-1½)			
LNAV MDA		720-1 401 (400-1)		720-1½ 401 (400-1½)	
CIRCLING		840-1 512 (600-1)	980-1 652 (700-1)	980-1¾ 652 (700-1¾)	980-2 652 (700-2)

REIL Rwy 13 and 31 0
MIRL Rwy 13-31 0

LOUISVILLE, GEORGIA
Orig-A 11AUG22

32°59'N-82°23'W

LOUISVILLE MUNI (2J3)

RNAV (GPS) RWY 31

SE-4, 10 JUL 2025 to 07 AUG 2025

SE-4, 10 JUL 2025 to 07 AUG 2025