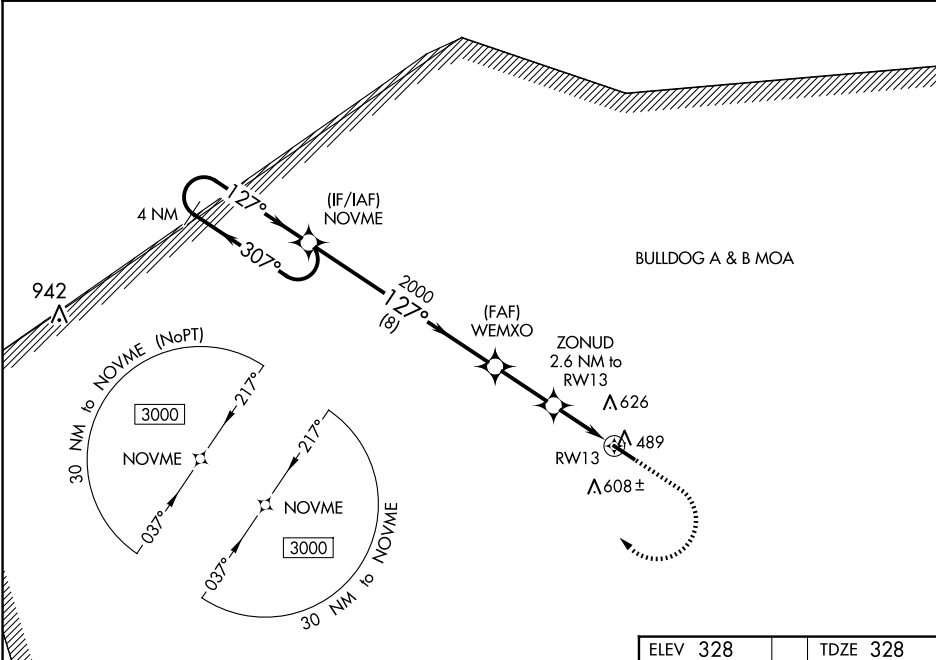


WAAS CH 56539 W13A	APP CRS 127°	Rwy Idg TDZE Apt Elev	5002 328 328
--	------------------------	-----------------------------	---

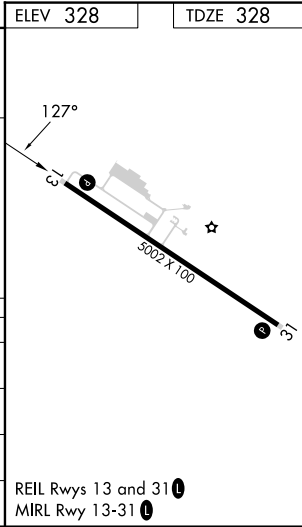
RNAV (GPS) RWY 13

LOUISVILLE MUNI (2J3)

RNP APCH GPS.		MISSED APPROACH: Climb to 1000 then climbing right turn to 3000 direct NOVME and hold.
▼ For uncompensated Baro-VNAV systems, LNAV/VNAV NA below -15°C or above 54°C. Rwy 13 helicopter visibility reduction below ¾ SM NA.		
AWOS-3PT 119.35	AUGUSTA APP CON 126.8 270.3	CTAF 122.9 0



VGSI and RNAV glidepath not coincident (VGSI Angle 3.83/TCH 23).				1000	3000	NOVME
4 NM Holding Pattern				↑	↷	✧
3000 ← 307° 127° → 2000				WEMXO 2000		
GP 3.00° TCH 45				ZONUD 2.6 NM to RW13		
2000 1200				1.1 NM to RW13		
8 NM 2.5 NM 1.5 1.1				RW13		
CATEGORY	A	B	C	D		
LPV DA	578-1		250 (300-1)			
LNAV/VNAV DA	768-1½		440 (500-1½)			
LNAV MDA	800-1	472 (500-1)	800-1⅛ 472 (500-1⅛)	800-1⅜ 472 (500-1⅜)		
CIRCLING	840-1 512 (600-1)	980-1 652 (700-1)	980-1¾ 652 (700-¾)	980-2 652 (700-2)		



SE-4, 10 JUL 2025 to 07 AUG 2025

SE-4, 10 JUL 2025 to 07 AUG 2025