

WAAS CH <b>90531</b> <b>W07A</b>	APP CRS <b>068°</b>	Rwy Idg TDZE Apt Elev	<b>5001</b> <b>653</b> <b>653</b>
--	------------------------	-----------------------------	---

RNAV (GPS) RWY 7

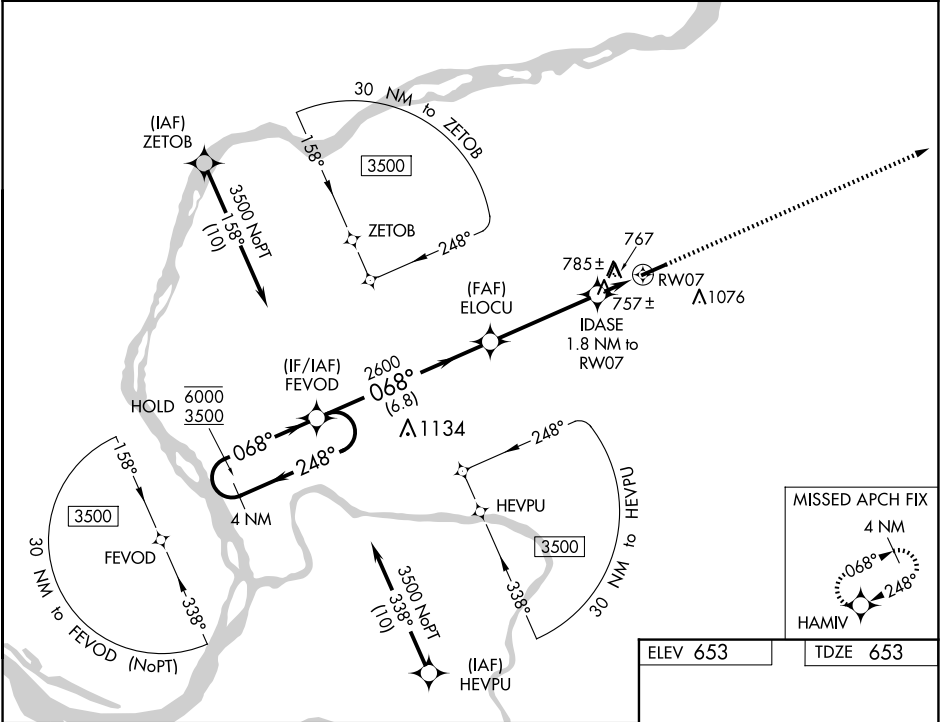
MARION-CRITTENDEN COUNTY JAMES C JOHNSON RGNL (GDA)

RNP APCH - GPS.

Rwy 7 helicopter visibility reduction below ¾ SM NA.

MISSED APPROACH:  
Climb to 3500 direct  
HAMIV and hold.

AWOS-3P <b>118.15</b>	MEMPHIS CENTER <b>133.65 292.15</b>	CTAF <b>122.9</b>
--------------------------	--	----------------------



4 NM Holding Pattern FEVOD		3500 HAMIV	
6000 ← 248°		↑	
3500 → 068°		✧	
2600		IDASE 1.8 NM to RW07	
3.00° TCH 40		1 NM to RW07	
6.8 NM		0.8 NM	
CATEGORY	A	B	C
LP MDA	1020-1		367 (400-1)
LNAV MDA	1040-1	387 (400-1)	1040-1½ 387 (400-1½)
CIRCLING	1160-1 507 (600-1)	1360-1 707 (800-1)	1380-2 727 (800-2)

ELEV 653

TDZE 653

068°

5001 X 75

0.5% UP

MIRL Rwy 7-25

REIL Rwy 7 and 25

RNAV (GPS) RWY 7

SE-1, 10 JUL 2025 to 07 AUG 2025

SE-1, 10 JUL 2025 to 07 AUG 2025