

WAAS  
CH **86631**  
**W25A**

APP CRS  
**248°**

Rwy Idg  
TDZE  
Apt Elev

**5001**  
**643**  
**653**

**RNAV (GPS) RWY 25**

MARION-CRITTENDEN COUNTY JAMES C JOHNSON RGNL (GDA)

RNP APCH - GPS.

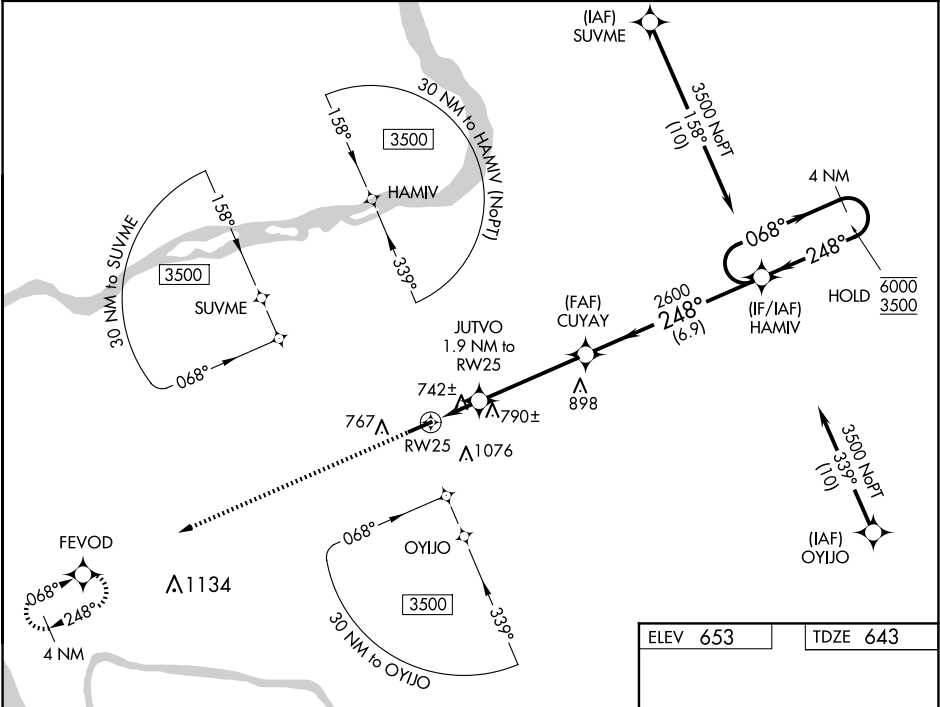
▼

▲

For uncompensated Baro-VNAV systems, LNAV/VNAV NA below -16°C or above 54°C.

MISSED APPROACH: Climb to 3500 direct FEVOD and hold.

AWOS-3P <b>118.15</b>	MEMPHIS CENTER <b>133.65 292.15</b>	CTAF <b>122.9</b>
--------------------------	--	----------------------



3500 FEVOD

VGSI and RNAV glidepath not coincident (VGSI Angle 3.00/TCH 36).

4 NM Holding Pattern

HAMIV

068° → 6000  
← 248° 3500

GP 3.00° TCH 40

JUTVO 1.9 NM to RW25

CUYAY 2600

1.1 NM to RW25

1260

2600

6.9 NM

CATEGORY	A	B	C	D
LPV DA	893-1	250 (300-1)		
LNAV/VNAV DA	945-1	302 (300-1)		
LNAV MDA	1000-1	357 (400-1)		
CIRCLING	1160-1 507 (600-1)	1360-1 707 (800-1)	1380-2 727 (800-2)	1380-2¼ 727 (800-2¼)

MIRL Rwy 7-25

REIL Rlys 7 and 25