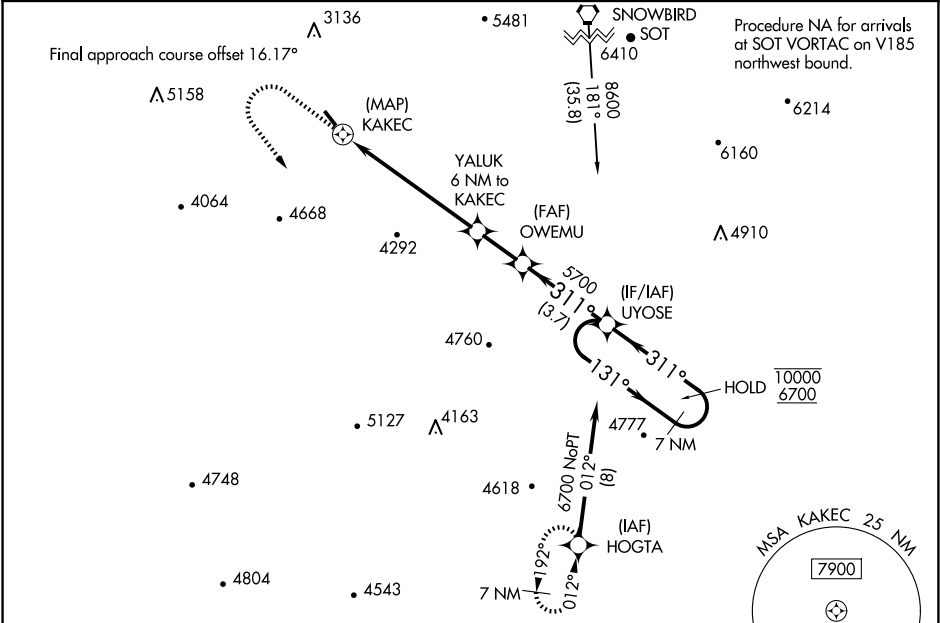


APP CRS	Rwy Idg	3060
311°	TDZE	2807
	Apt Elev	2857

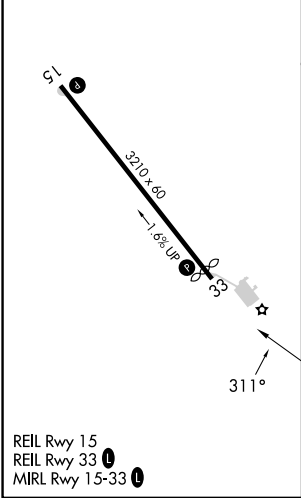
RNAV (GPS) RWY 33
JACKSON COUNTY (24A)

RNP APCH.	MISSED APPROACH: Climb to 5000 then climbing left turn to 8000 direct HOGTA and hold.
▼ Procedure NA at night. ▲ Rwy 33 helicopter visibility reduction below 1 SM NA. ❄ -14°C	

AWOS-3PT 118.9	ATLANTA CENTER 134.8 379.95	UNICOM 123.0 (CTAF) 0
-------------------	--------------------------------	--------------------------



ELEV 2857	TDZE 2807
-----------	-----------



5000	8000	HOGTA	Visual segment - Obstacles.	UYOSE	7 NM Holding Pattern
↑	↩	✦			
0.5 6 NM 2 NM 3.7 NM					
CATEGORY	A	B	C	D	
LNAV MDA	4360-1¼ 1553 (1600-1¼)	4360-1½ 1553 (1600-1½)	NA		
CIRCLING	4360-1¼ 1503 (1600-1¼)	4520-1½ 1663 (1700-1½)	NA		

SE-2, 10 JUL 2025 to 07 AUG 2025

SE-2, 10 JUL 2025 to 07 AUG 2025