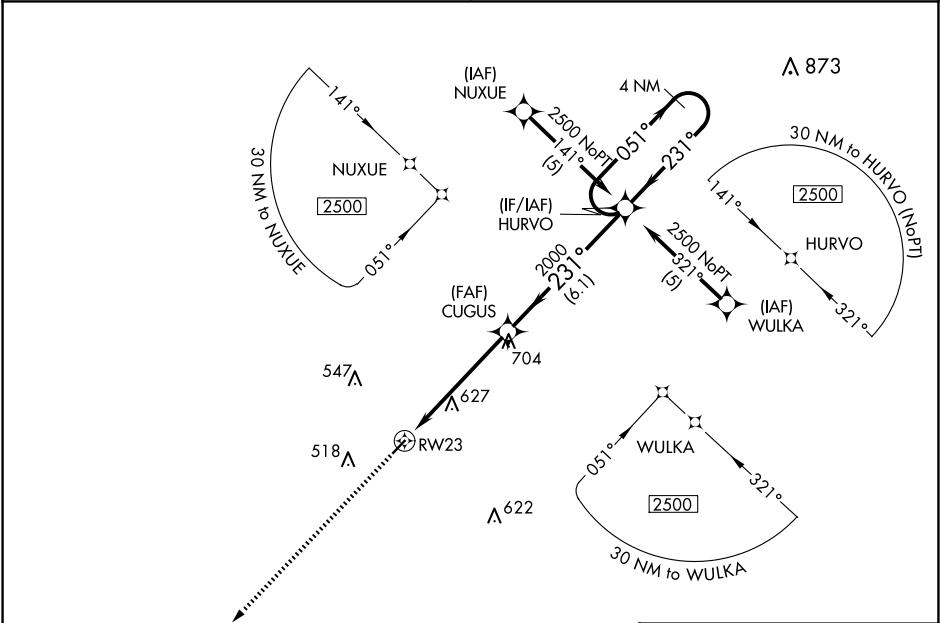


APP CRS	Rwy Idg	3603
231°	TDZE	231
	Apt Elev	231

RNAV (GPS) RWY 23
BAMBERG COUNTY (99N)

RNP APCH.	Procedure NA at night. Rwy 23 helicopter visibility reduction below 1 SM NA. Use Orangeburg Muni altimeter setting; when not received, procedure NA.	MISSED APPROACH: Climb to 2500 direct JIKOM and hold.
-----------	--	---

COLUMBIA APP CON 124.15 338.2	UNICOM 122.8 (CTAF) 0
----------------------------------	--------------------------



ELEV 231	TDZE 231
2500	JIKOM
RWY 23	HURVO
CUGUS	4 NM Holding Pattern
2000	051° → 2500
231°	← 231°
3.05°	TCH 40
5.4 NM	6.1 NM
CATEGORY	A B C D
LNNAV MDA	920-1 689 (700-1) NA