

APP CRS
065°

Rwy Idg
TDZE
2240

Apt Elev
2241

RNAV (GPS) RWY 7

JOHNSON COUNTY (6A4)

RNP APCH - GPS

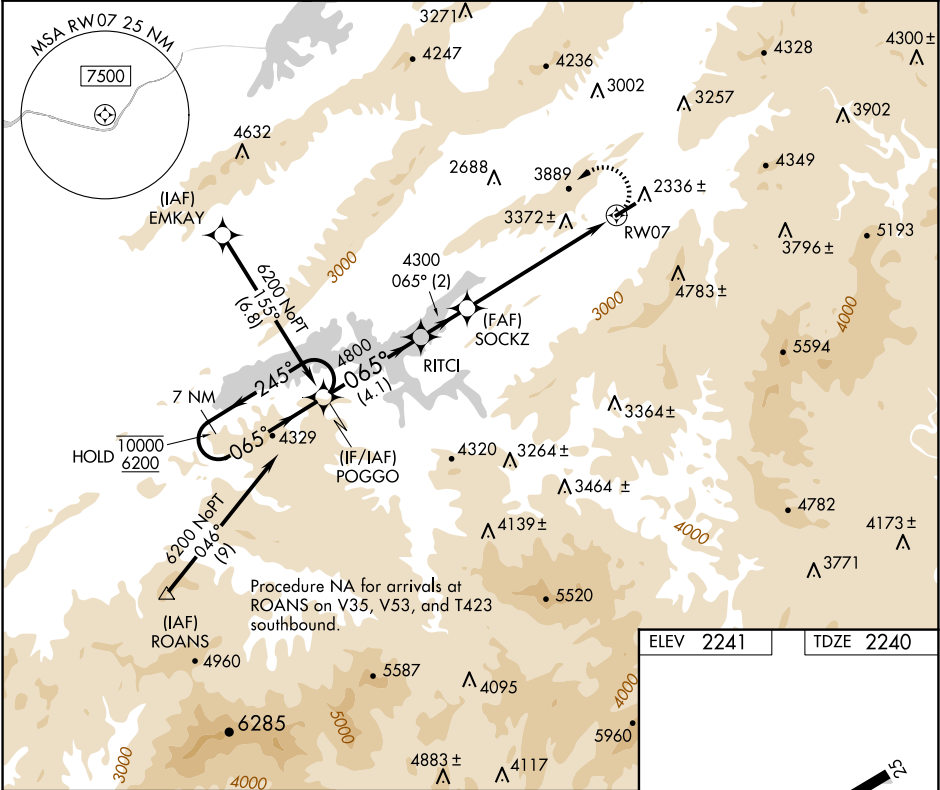
NA

-10°C

Rwy 7 helicopter visibility reduction below 1 SM NA. Circling NA for Cat C south of Rwy 7-25. When local altimeter setting not received, use Abingdon altimeter setting and increase all MDAs 80 feet. Circling NA for Cats B and C when using Abingdon altimeter setting. Procedure NA at night.

MISSED APPROACH:
Climbing left turn to 6200 direct POGGO and hold.

AWOS-3 126.225	TRI-CITY APP CON ★ 134.425 349.0	UNICOM 122.7 (CTAF)
-------------------	-------------------------------------	------------------------



7 NM Holding Pattern

POGGO

Visual Segment - Obstacles.

6200 POGGO

10000 ← 245°

6200 → 065°

065°

4800

4300

RW07

4.1 NM

2 NM

6.3 NM

CATEGORY	A	B	C	D
LNAV MDA	4040-1¼ 1800 (1800-1¼)	4040-1½ 1800 (1800-1½)	4040-3 1800 (1800-3)	
CIRCLING	4040-1¼ 1799 (1800-1¼)	4260-1½ 2019 (2100-1½)	4260-3 2019 (2100-3)	NA