

APP CRS  
253°

Rwy Idg  
4498

TDZE  
2241

Apt Elev  
2241

RNAV (GPS) RWY 25

JOHNSON COUNTY (6A4)

RNP APCH - GPS

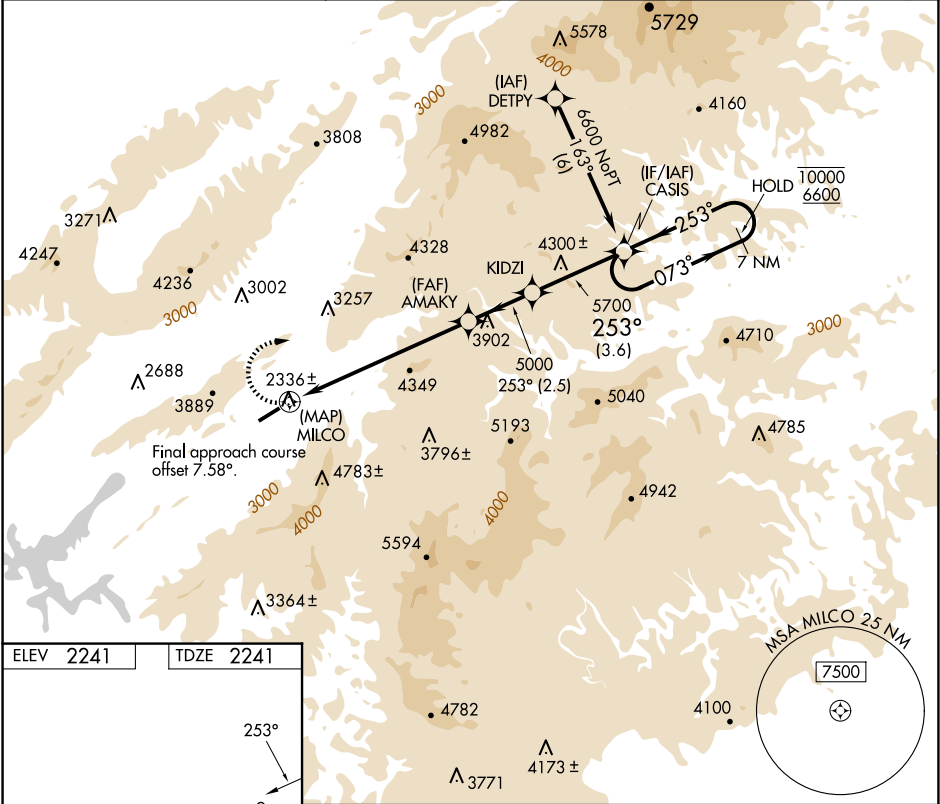
NA

-10°C

Rwy 25 helicopter visibility reduction below 1 SM NA. Circling NA for Cats C and D south of Rwy 7-25. When local altimeter setting not received, use Abingdon altimeter setting and increase all MDAs 80 feet. Procedure NA at night.

MISSED APPROACH:  
Climbing right turn to 6600  
direct CASIS and hold.

AWOS-3 126.225	TRI-CITY APP CON ★ 134.425 349.0	UNICOM 122.7 (CTAF)
-------------------	-------------------------------------	------------------------



ELEV 2241

TDZE 2241

253°

4498 X 75

6600 CASIS

Visual Segment - Obstacles.

7 NM Holding Pattern

MILCO

AMAKY

KIDZI

CASIS

0.5

7 NM

2.5 NM

3.6 NM

CATEGORY	A	B	C	D
LNAV MDA	4880-1¼ 2639 (2700-1¼)	4880-1½ 2639 (2700-1½)	4880-3 2639 (2700-3)	
CIRCLING	4880-1¼ 2639 (2700-1¼)	4880-1½ 2639 (2700-1½)	4880-3 2639 (2700-3)	