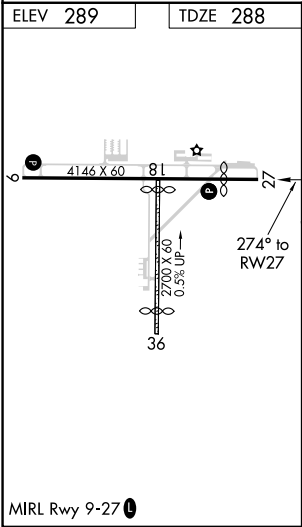
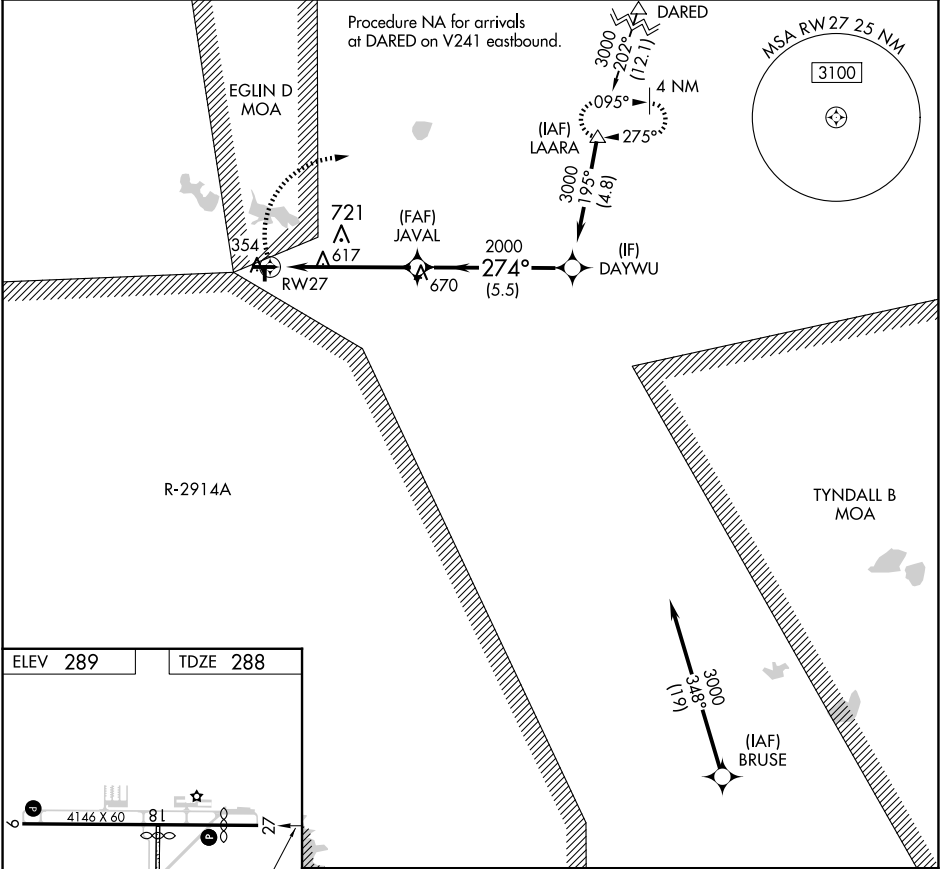


WAAS CH 97725 W27A	APP CRS 274°	Rwy Idg TDZE 288 Apt Elev 289
--	------------------------	---

RNAV (GPS) RWY 27
DEFUNIAK SPRINGS (54J)

RNP APCH.	MISSED APPROACH: Climbing right turn to 3000 direct LAARA and hold.
-----------	---

AWOS-3P 118.725	EGLIN APP CON 124.05 284.65	UNICOM 123.05 (CTAF) 0
---------------------------	---------------------------------------	----------------------------------



3000		LAARA		Visual Segment - Obstacles.		DAYWU	
RW27		1.7 NM to RW27		JAVAL		3000	
		1.7 NM		3.6 NM		5.5 NM	
274°		2000					
CATEGORY		A		B		C	
D							
LP MDA		880-1 592 (600-1)				NA	
LNAV MDA		880-1 592 (600-1)				NA	
CIRCLING		880-1 591 (600-1)		920-1 631 (700-1)		NA	