

WAAS CH <b>61232</b> <b>W34A</b>	APP CRS <b>346°</b>	Rwy Idg <b>6400</b> TDZE <b>214</b> Apt Elev <b>220</b>
--	------------------------	---

RNAV (GPS) RWY 34

VAIDEN FLD (A08)

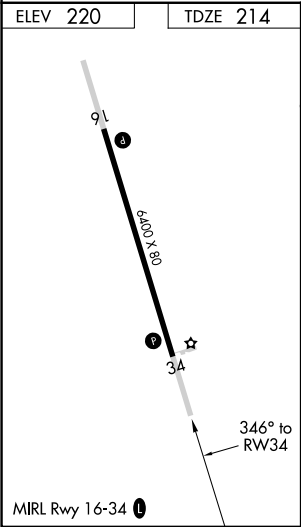
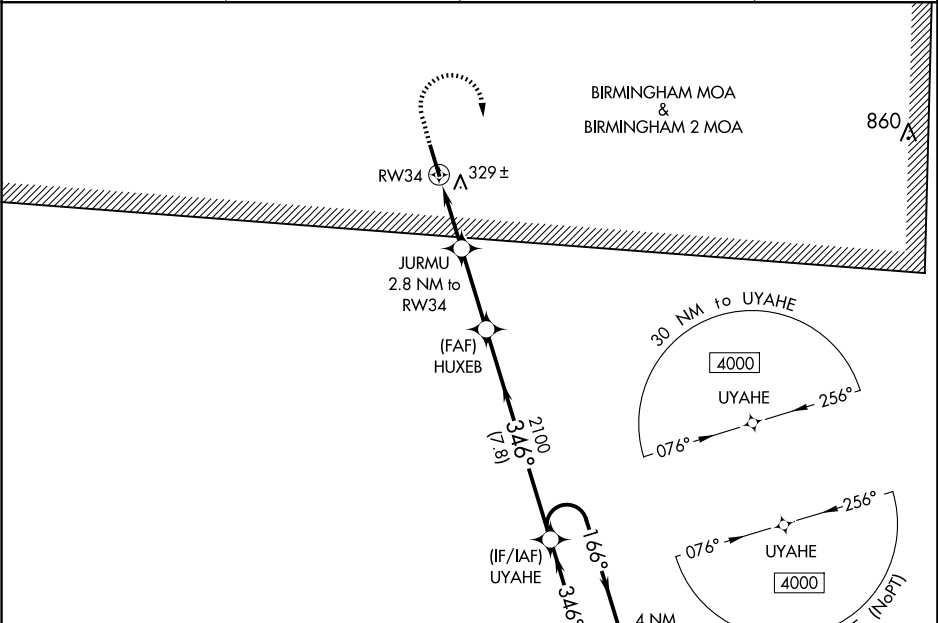
▼

▲ NA

Baro-VNAV NA. DME/DME RNP-0.3 NA. Use Demopolis altimeter setting; when not received, use Tuscaloosa altimeter setting and increase all DA 27 feet, increase all MDA 40 feet, increase all LPV visibilities 1/8 mile, and increase Circling Cat D visibility 1/4 mile. Helicopter visibility reduction below 3/4 SM NA.

MISSED APPROACH: Climb to 700 then climbing right turn to 4000 direct UYAHE and hold, continue climb-in-hold to 4000.

AWOS-3P <b>119.350</b>	DYA AWOS-3P <b>119.475</b>	ATLANTA CENTER <b>132.25 263.025</b>	CTAF <b>122.9 0</b>
---------------------------	-------------------------------	---	------------------------



PINE HILL EAST MOA & CAMDEN RIDGE MOA				
<div><div>700</div><div>4000</div><div>UYAHE</div></div>				
*LNAV only.				
<div><div>RW34</div><div>JURMU 2.8 NM to RW34</div><div>HUXEB 2100</div><div>UYAHE</div><div>4 NM Holding Pattern</div></div>				
<div><div>1140*</div><div>346°</div><div>166°</div><div>4000</div><div>GP 3.00°</div><div>TCH 40</div></div>				
<div><div>2.8 NM</div><div>3 NM</div><div>7.8 NM</div></div>				
CATEGORY	A	B	C	D
LPV DA	546-1 1/8 332 (400-1 1/8)			
LNAV/VNAV DA	707-1 3/4 493 (500-1 3/4)			
LNAV MDA	660-1	446 (500-1)	660-1 3/8	446 (500-1 3/8)
CIRCLING	740-1	760-1	760-1 1/2	880-2
	520 (600-1)	540 (600-1)	540 (600-1 1/2)	660 (700-2)

SE-4, 10 JUL 2025 to 07 AUG 2025

SE-4, 10 JUL 2025 to 07 AUG 2025