

LIVE OAK, FLORIDA

AL-9758 (FAA)

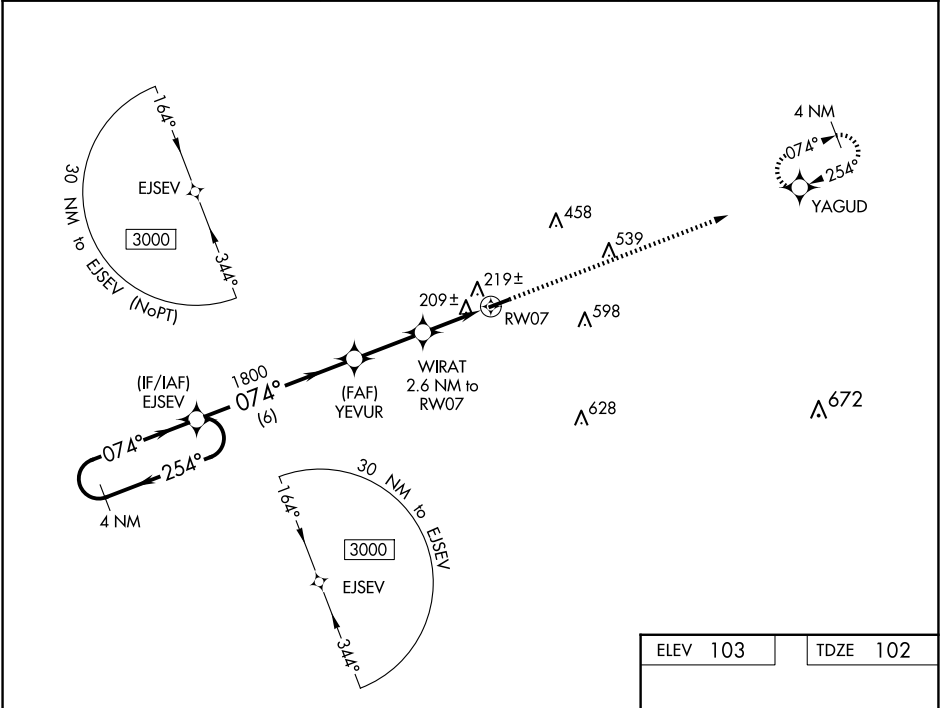
21084

WAAS CH 63132 W07A	APP CRS 074°	Rwy Idg TDZE Apt Elev	4005 102 103
--	------------------------	-----------------------------	---

RNAV (GPS) RWY 7
SUWANNEE COUNTY (24J)

<p>▽ When local altimeter setting not received, use Perry altimeter setting and increase all MDAs 100 feet. DME/DME RNP-0.3 NA. Helicopter visibility reduction below 1 SM NA. Procedure NA at night.</p>	<p>MISSED APPROACH: Climb to 3000 direct YAGUD and hold.</p>
--	--

AWOS-3 118.225	JACKSONVILLE CENTER 125.375 254.325	UNICOM 122.8 (CTAF) 0
--------------------------	---	---------------------------------



VGSI and descent angles not coincident (VGSI Angle 3.00/TCH 44).				3000 ↑	YAGUD ✧	
<div>4 NM Holding Pattern</div> <div>EJSEV</div> <div>YEVUR</div> <div>3.00° TCH 40</div> <div>WIRAT 2.6 NM to RW07</div> <div>RW07</div> <div>074° to RW07</div> <div>4005 X 75</div>						
<div>3000 ← 254°</div> <div>074° →</div> <div>074°</div> <div>1800 *</div> <div>960</div> <div>6 NM</div> <div>2.6 NM</div> <div>2.6 NM</div>						
CATEGORY	A	B	C	D		
LP MDA	460-1	358 (400-1)	NA			
LNAV MDA	480-1	378 (400-1)	NA			
CIRCLING	560-1 457 (500-1)	600-1 497 (500-1)	NA		REIL Rwy 7 and 25 MIRL Rwy 7-25	

LIVE OAK, FLORIDA
Orig-B 26JUN14

30°18'N-83°01'W

SUWANNEE COUNTY (24J)
RNAV (GPS) RWY 7

SE-3, 10 JUL 2025 to 07 AUG 2025

SE-3, 10 JUL 2025 to 07 AUG 2025