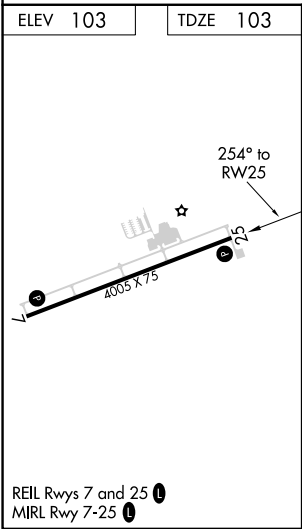
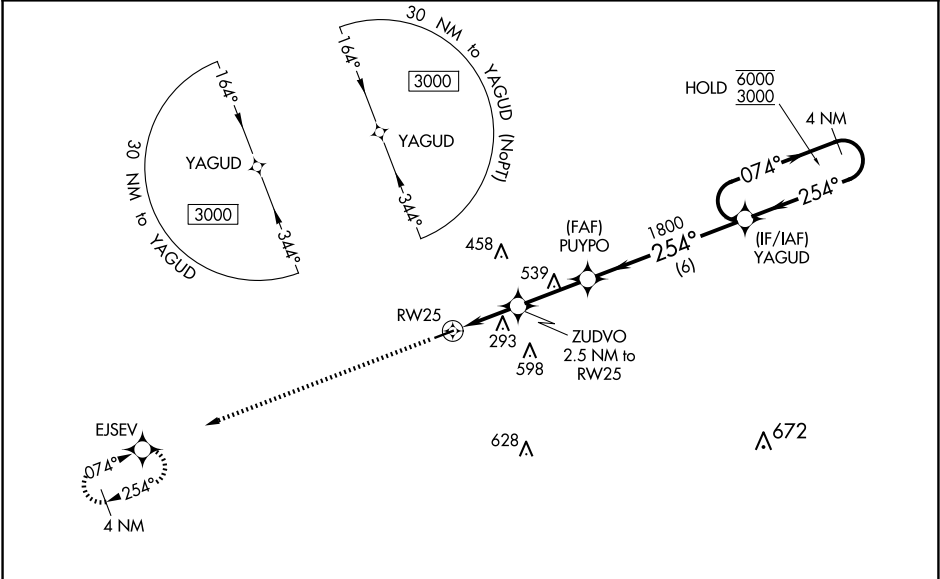


WAAS CH <b>58232</b> <b>W25A</b>	APP CRS <b>254°</b>	Rwy Idg TDZE Apt Elev	<b>4005</b> <b>103</b> <b>103</b>
----------------------------------------	------------------------	-----------------------------	-----------------------------------------

RNAV (GPS) RWY 25  
SUWANNEE COUNTY (24J)

RNP APCH.	MISSED APPROACH: Climb to 3000 direct EJSEV and hold.
<div><div></div><div>Procedure NA at night. Rwy 25 helicopter visibility reduction below 1 SM NA. For uncompensated Baro-VNAV systems, LNAV/VNAV NA below -15°C or above 54°C.</div></div>	

AWOS-3 <b>118.225</b>	JACKSONVILLE CENTER <b>125.375 254.325</b>	UNICOM <b>122.8 (CTAF) 0</b>
--------------------------	-----------------------------------------------	---------------------------------



3000		EJSEV		4 NM Holding Pattern	
*LNAV only.		ZUDVO 2.5 NM to RW25		YAGUD	
RW25		PUYPO 1800		074° → 6000 ← 254° 3000	
940*		1800		GP 3.00° TCH 52	
2.5 NM		2.7 NM		6 NM	
CATEGORY	A	B	C	D	
LPV DA	353-1	250 (300-1)	NA		
LNAV/VNAV DA	536-1½	433 (500-1½)	NA		
LNAV MDA	560-1	457 (500-1)	NA		
CIRCLING	560-1 457 (500-1)	600-1 497 (500-1)	NA		

SE-3, 10 JUL 2025 to 07 AUG 2025

SE-3, 10 JUL 2025 to 07 AUG 2025