

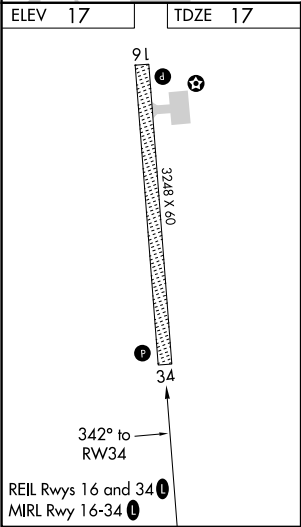
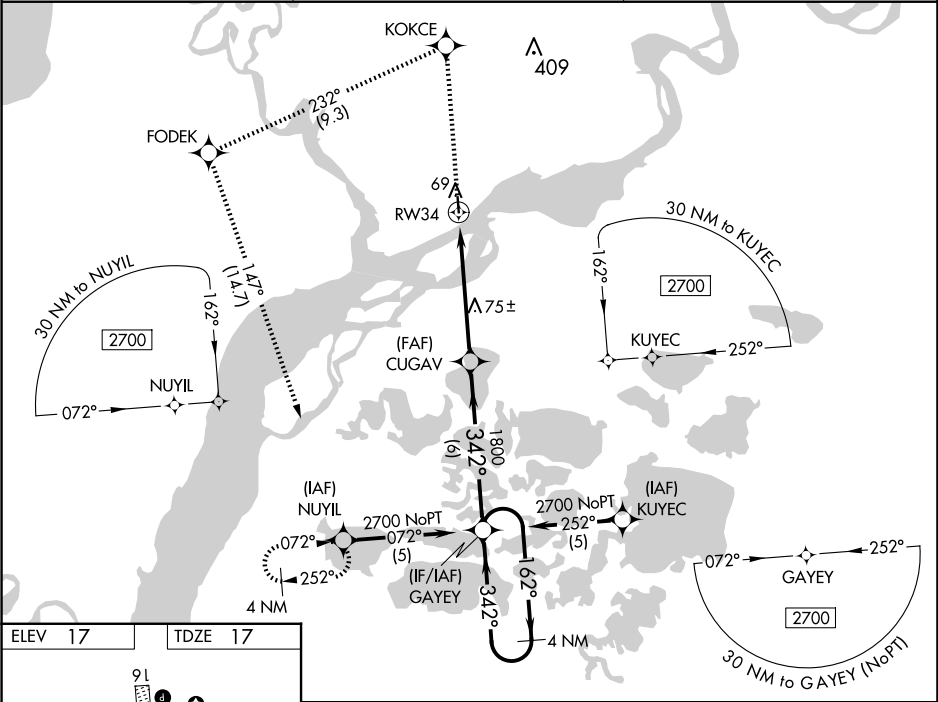
WAAS CH 40209 W34A	APP CRS 342°	Rwy Idg 3248 TDZE 17 Apt Elev 17
--	------------------------	---

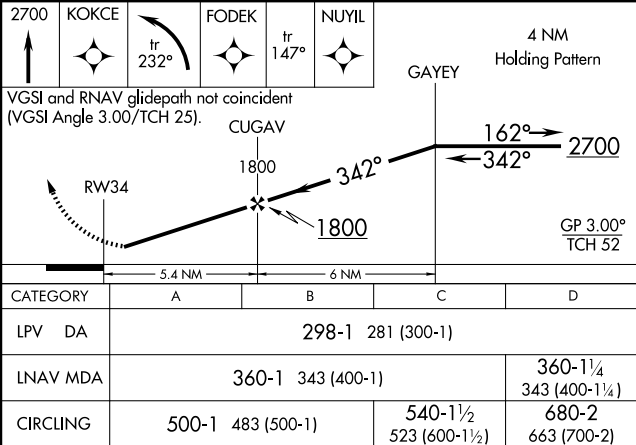
RNAV (GPS) RWY 34

NAPAKIAK (WNA) (PANA)

<div><div><div><div></div><div>NA</div><div></div></div><div><div></div><div></div><div></div></div></div><div>DME/DME RNP-0.3 NA. When local altimeter setting not received, use Bethel altimeter setting. Procedure NA at night for Cat C and D aircraft. Rwy 34 helicopter visibility reduction 1 SM NA.</div></div>	MISSED APPROACH: Climb to 2700 direct KOKCE and left turn on track 232° to FODEK on track 147° to NUYIL and hold.
---	---

AWOS-3P 121.425	ANCHORAGE CENTER 125.2 372.0	CTAF 122.9
---------------------------	--	----------------------



2700 ↑	KOKCE ✧	tr 232° ↷	FODEK ✧	tr 147° ↷	NUYIL ✧	4 NM Holding Pattern
VGSI and RNAV glidepath not coincident (VGSI Angle 3.00/TCH 25).						
						
RW34						
CUGAV						
1800						
GP 3.00° TCH 52						
5.4 NM 6 NM						
CATEGORY	A	B	C	D		
LPV DA	298-1 281 (300-1)					
LNAV MDA	360-1 343 (400-1)				360-1¼ 343 (400-1¼)	
CIRCLING	500-1 483 (500-1)		540-1½ 523 (600-1½)		680-2 663 (700-2)	