

KOTLIK, ALASKA

AL-9750 (FAA)

24361

APP CRS <b>198°</b>	Rwy Idg TDZE Apt Elev	<b>4400</b> <b>15</b> <b>15</b>
------------------------	-----------------------------	---------------------------------------

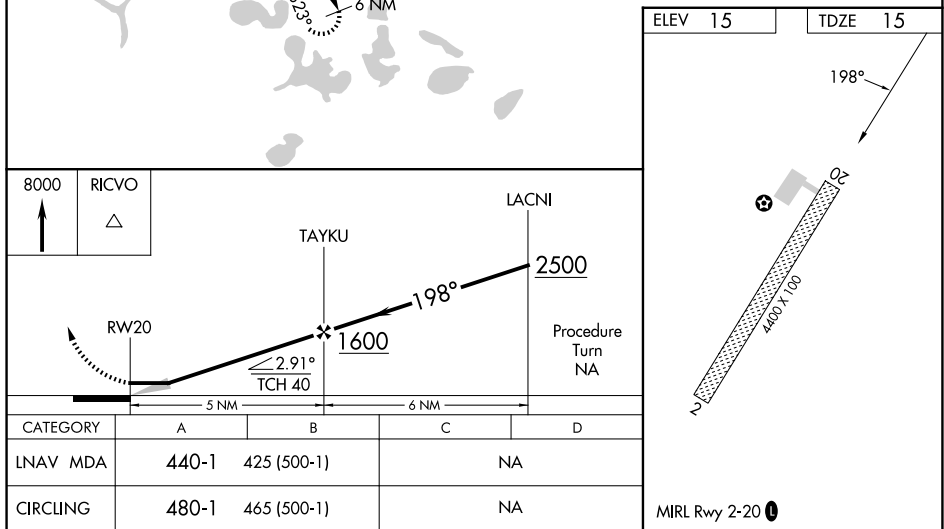
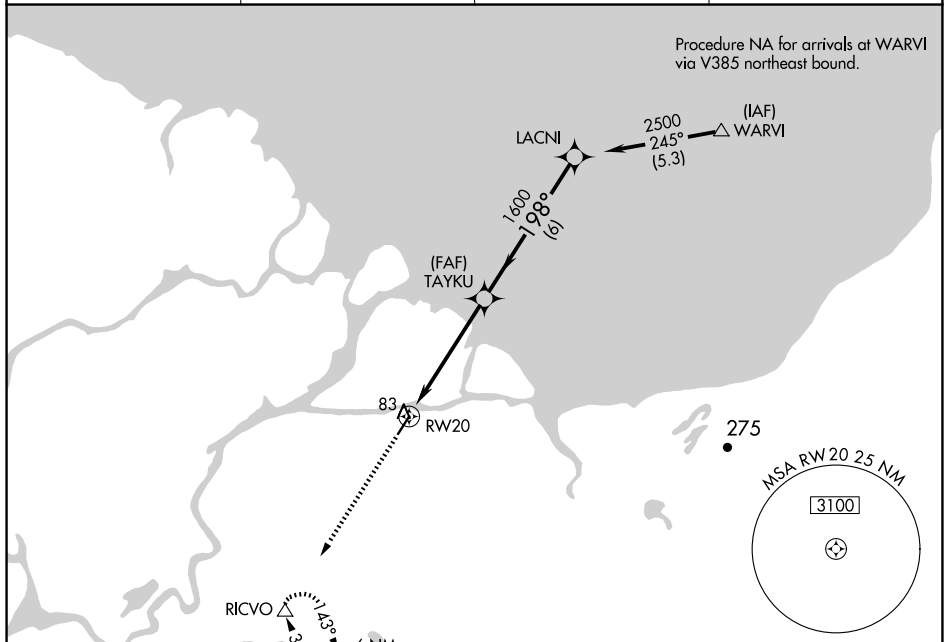
# RNAV (GPS) RWY 20

RNP APCH - GPS.

<b>T</b>	When local altimeter not received use Emmonak
<b>A</b> NA	altimeter setting. Procedure NA at night.

MISSED APPROACH: Climb to 8000 direct RICVO WP and hold.

AWOS-3P <b>118.1</b>	ENM/PAEM AWOS-3P <b>135.35</b>	ANCHORAGE CENTER <b>124.0</b>	CTAF <b>122.90</b>
-------------------------	-----------------------------------	----------------------------------	-----------------------



KOTLIK, ALASKA  
Orig-B 26DEC24

63°02'N-163°32'W

KOTLIK (2A9) (PFKO)  
RNAV (GPS) RWY 20

AK, 12 JUN 2025 to 07 AUG 2025

AK, 12 JUN 2025 to 07 AUG 2025