

VORTAC BRV	APP CRS	Rwy ldg	6000
114.5	314°	TDZE	196
Chan 92		Apt Elev	219

VOR RWY 33

STAFFORD RGNL (RMN)

▼

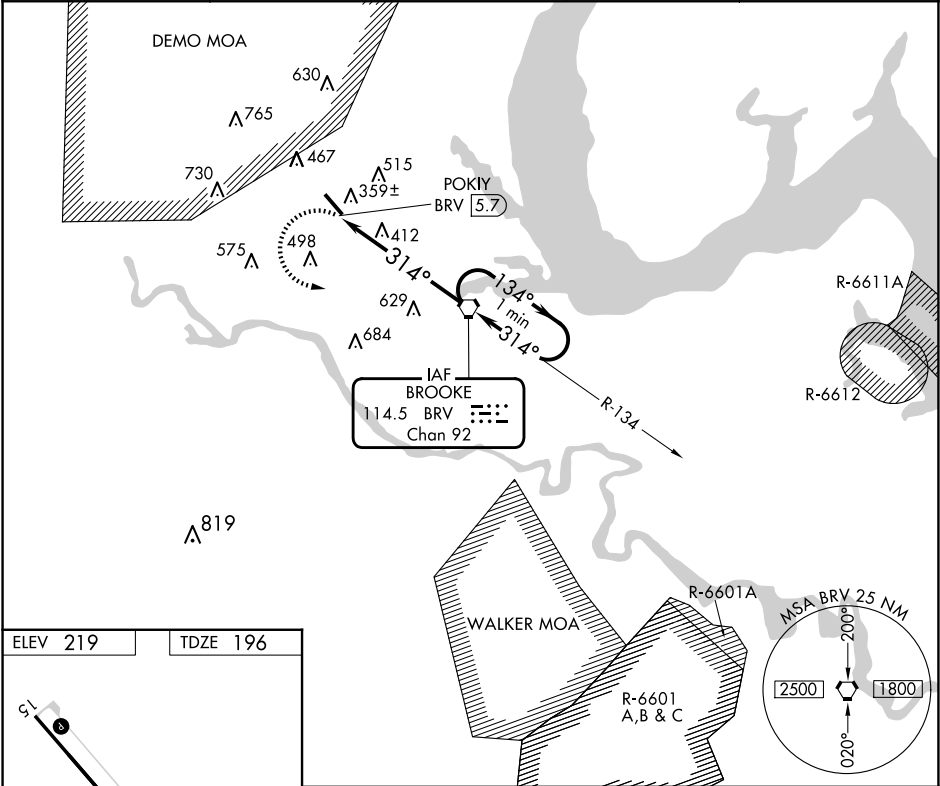
Inoperative table does not apply to Cat C.
Circling Rwy 15 NA at night.

MALS



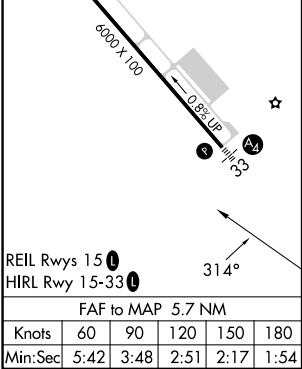
MISSED APPROACH: Climbing left turn to 2000 direct BRV VORTAC and hold.

AWOS-3 126.325	QUANTICO APP CON ★ 127.05 290.375	GCO 135.075	UNICOM 122.725 (CTAF) 0
-------------------	--------------------------------------	----------------	----------------------------



ELEV 219

TDZE 196



FAF to MAP 5.7 NM

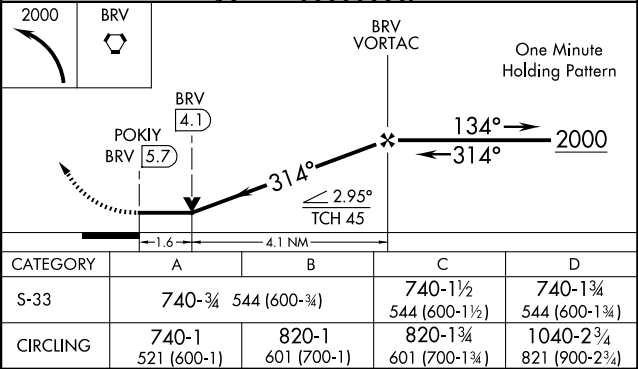
Knots	60	90	120	150	180
Min:Sec	5:42	3:48	2:51	2:17	1:54

2000

BRV

BRV VORTAC

One Minute Holding Pattern



CATEGORY	A	B	C	D
S-33	740- $\frac{3}{4}$ 544 (600- $\frac{3}{4}$)		740-1 $\frac{1}{2}$ 544 (600-1 $\frac{1}{2}$)	740-1 $\frac{3}{4}$ 544 (600-1 $\frac{3}{4}$)
CIRCLING	740-1 521 (600-1)	820-1 601 (700-1)	820-1 $\frac{1}{4}$ 601 (700-1 $\frac{1}{4}$)	1040-2 $\frac{3}{4}$ 821 (900-2 $\frac{3}{4}$)