

STAFFORD, VIRGINIA

AL-9743 (FAA)

24249

WAAS CH 81805 W33A	APP CRS 329°	Rwy Idg 6000 TDZE 195 Apt Elev 219
--	------------------------	---

RNAV (GPS) RWY 33
STAFFORD RGNL (RMN)

RNP APCH - GPS.

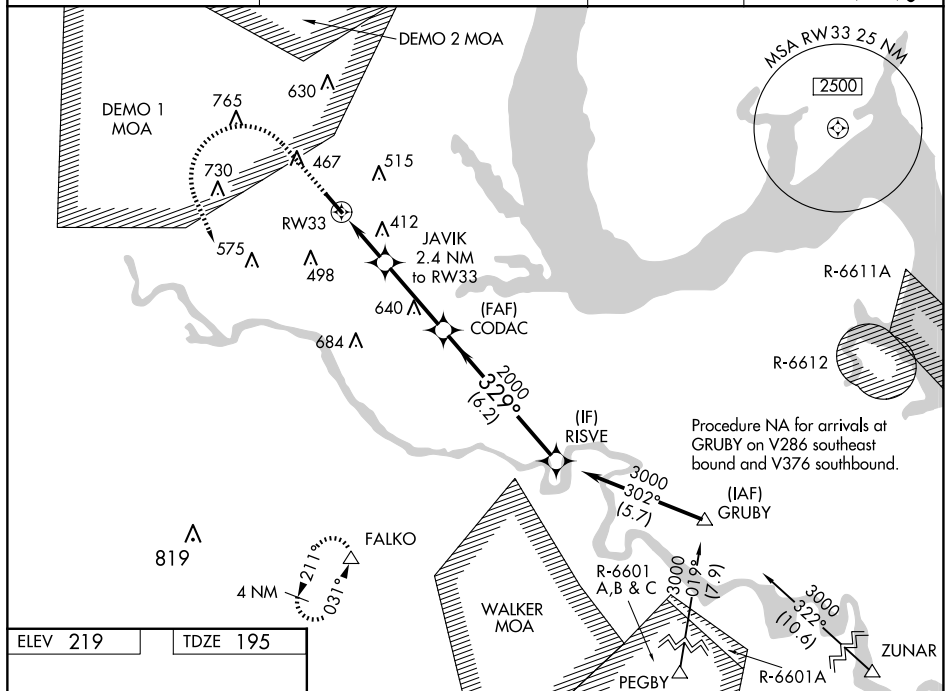
T Inop table does not apply to LPV all Cats. For uncompensated Baro-VNAV systems, LNAV/VNAV NA below -15°C or above 54°C. Circling Rwy 15 NA at night.

MALS



MISSED APPROACH: Climb to 700 then climbing left turn to 3000 direct FALKO and hold, continue climb-in-hold to 3000.

AWOS-3 126.325	QUANTICO APP CON ★ 127.05 290.375	GCO 135.075	UNICOM 122.725 (CTAF) ①
--------------------------	---	-----------------------	-----------------------------------



CATEGORY	A	B	C	D
LPV DA	445-3/4 250 (300-3/4)			
LNAV/VNAV DA	680-1 1/8 485 (500-1 1/8)			
LNAV MDA	680-3/4 485 (500-3/4)		680-1 1/8 485 (500-1 1/8)	
CIRCLING	720-1 501 (600-1)	820-1 601 (700-1)	820-1 3/4 601 (700-1 3/4)	1040-2 3/4 821 (900-2 3/4)

STAFFORD, VIRGINIA
Amdt 2 16MAY24

38°24'N - 77°27'W

STAFFORD RGNL (RMN)
RNAV (GPS) RWY 33

NE-3, 10 JUL 2025 to 07 AUG 2025