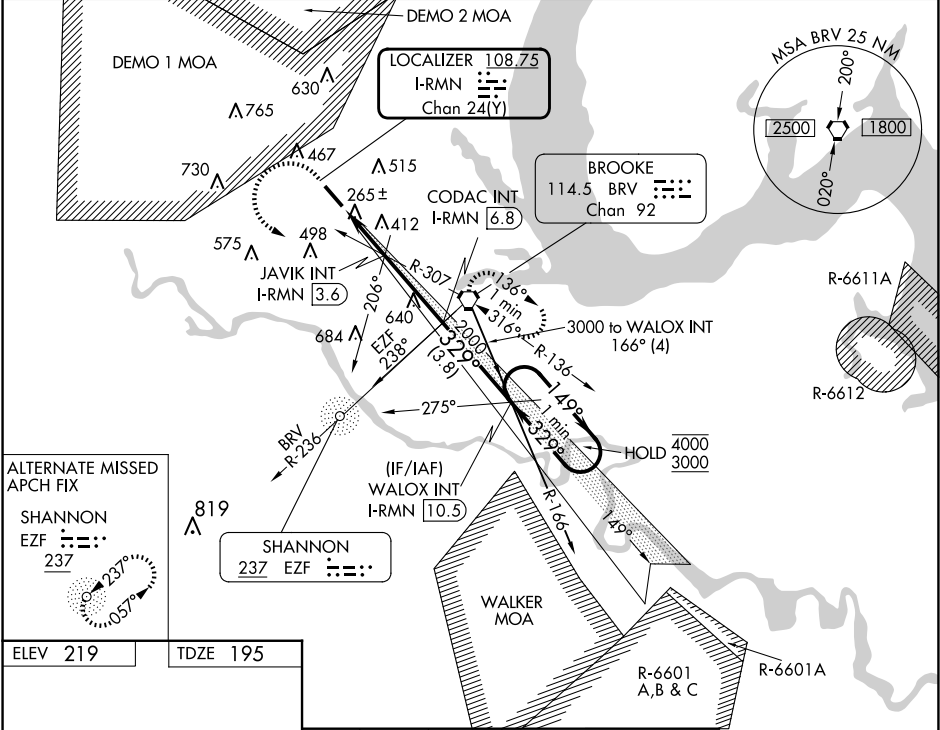


LOC/DME	I-RMN	APP CRS	Rwy Idg	6000
108.75		329°	TDZE	195
Chan 24 (Y)			Apt Elev	219

ILS or LOC RWY 33  
STAFFORD RGNL (RMN)

ADF or DME required.	MALS	MISSED APPROACH: Climb to 700 then climbing left turn to 2100 direct BRV VORTAC and hold, continue climb-in-hold to 2100.
<div><div></div><div></div></div> Circling Rwy 15 NA at night. Inop table does not apply	<div><div></div><div></div></div>	

AWOS-3 126.325	QUANTICO APP CON ★ 127.05 290.375	GCO 135.075	UNICOM 122.725 (CTAF) ①
-------------------	--------------------------------------	----------------	----------------------------

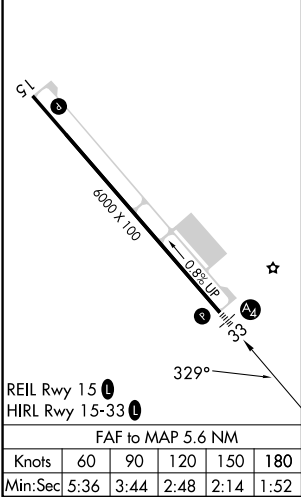


ALTERNATE MISSED APCH FIX

SHANNON  
EFZ 237

237°

ELEV 219	TDZE 195
----------	----------



One Minute Holding Pattern				
WALOX INT I-RMN 10.5				
JAVIK INT I-RMN 3.6				
CODAC INT I-RMN 6.8				
I-RMN 1.2				
I-RMN 2.2				
980				
2000				
149° → 4000				
← 329° 3000				
GS 3.00° TCH 46				
1.1 NM 1.3 NM 3.2 NM 3.8 NM				
CATEGORY	A	B	C	D
S-ILS 33	445-¾	250 (300-¾)		
S-LOC 33	560-¾	365 (400-¾)		
CIRCLING	720-1 501 (600-1)	820-1 601 (700-1)	820-1¾ 601 (700-1¾)	1040-2¾ 821 (900-2¾)

NE-3, 10 JUL 2025 to 07 AUG 2025

NE-3, 10 JUL 2025 to 07 AUG 2025