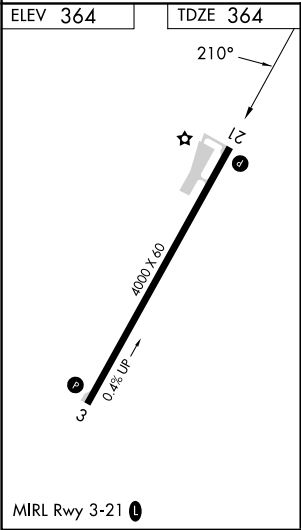
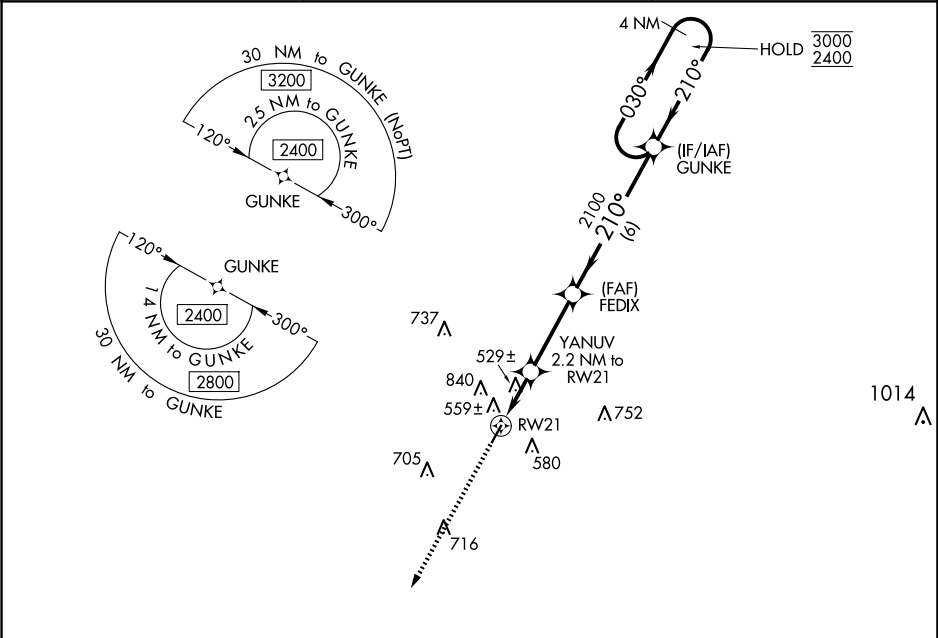


WAAS CH <b>53431</b> <b>W21A</b>	APP CRS <b>210°</b>	Rwy Idg <b>4000</b> TDZE <b>364</b> Apt Elev <b>364</b>
--	------------------------	---

RNAV (GPS) RWY 21

WINONA-MONTGOMERY COUNTY (5A6)

RNP APCH - GPS.		MISSED APPROACH: Climb to 2500 direct GUCEY and hold.
<div><div><div></div><div>NA</div></div></div> <div>Rwy 21 helicopter visibility reduction below 1 SM NA. Procedure NA at night. Circling NA northwest of Rwy 3-21. When local altimeter setting not received, use GNF altimeter setting.</div>		
AWOS-3PT 120.175	MEMPHIS CENTER 128.5 279.55	CTAF 122.9 0



<div><div><div>GUCEY</div><div></div></div><div><div>2500</div><div></div></div><div><div>GUCEY</div><div></div></div><div><div>VGSI and descent angles not coincident (VGSI Angle 4.00/TCH 30).</div></div></div>						
<div><div><div>RW21</div><div></div></div><div><div>YANUV 2.2 NM to RW21</div><div></div><div><div>1080</div></div></div><div><div>FEDIX</div><div></div><div><div>2100</div></div></div><div><div>GUNKE</div><div></div><div><div>2100</div></div></div><div><div>4 NM Holding Pattern</div><div></div><div><div>3000</div><div>2400</div></div></div></div>						
<div><div>2.2 NM</div><div>3.2 NM</div><div>6 NM</div></div>						
CATEGORY		A		B	C	D
LP	MDA	860-1	496 (500-1)	860-1 $\frac{3}{8}$ 496 (500-1 $\frac{3}{8}$ )	NA	
LNAV	MDA	900-1	536 (600-1)	900-1 $\frac{1}{2}$ 536 (600-1 $\frac{1}{2}$ )	NA	
CIRCLING		960-1	596 (600-1)	1100-2 736 (800-2)	NA	