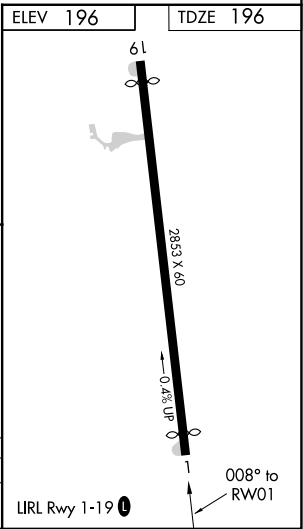
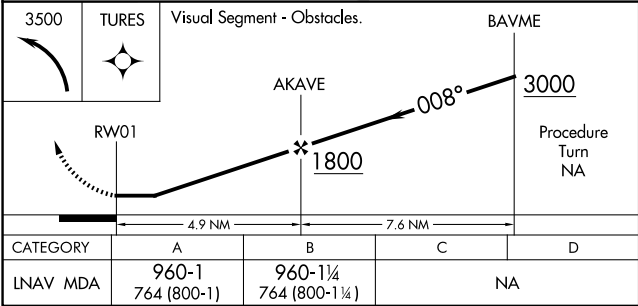
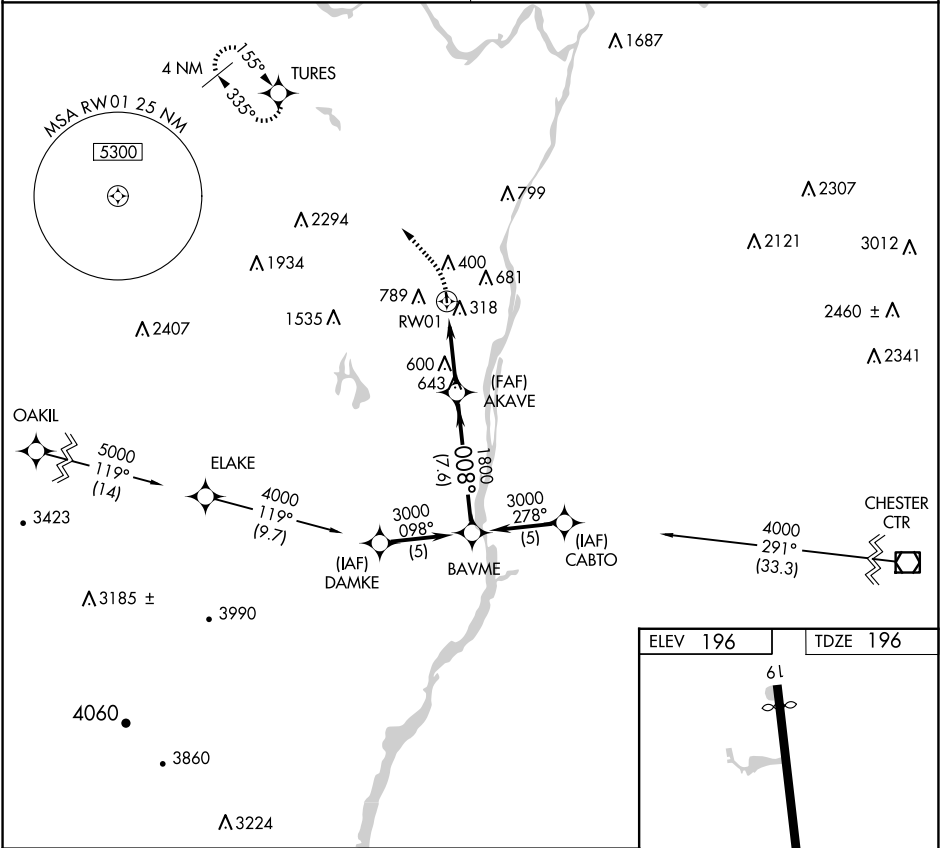


APP CRS	Rwy ldg	2703
008°	TDZE	196
	Apt Elev	196

RNAV (GPS) RWY 1  
SOUTH ALBANY (4B0)

RNP APCH.	MISSED APPROACH: Climbing left turn to 3500 direct TURES WP and hold.
▼ Use Albany Intl altimeter setting. Procedure NA at night.	
▲ NA Rwy 1 helicopter visibility reduction below 1 SM NA.	

ALBANY APP CON 118.05 263.075	CTAF 122.9 0
----------------------------------	-----------------



NE-2, 10 JUL 2025 to 07 AUG 2025

NE-2, 10 JUL 2025 to 07 AUG 2025