

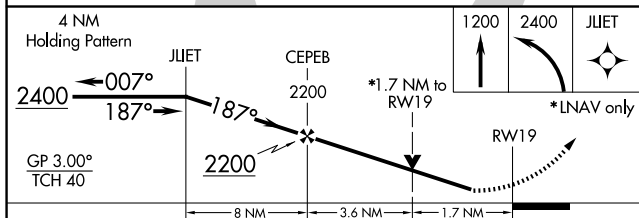
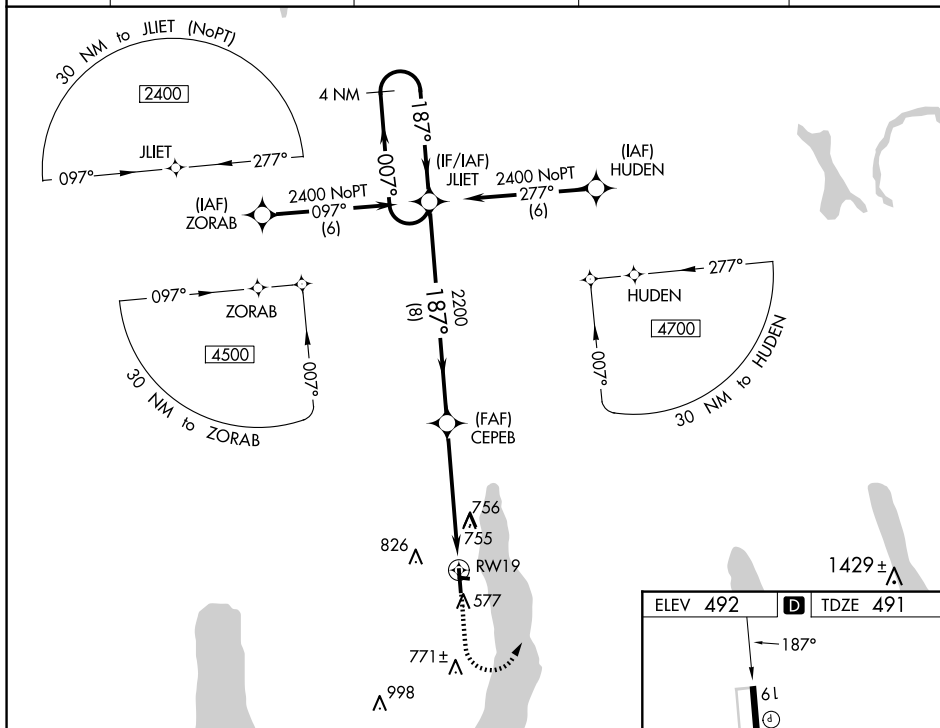
| | | |
|--|------------------------|---|
| WAAS CH 77636 W19A | APP CRS 187° | Rwy Idg 4292 TDZE 491 Apt Elev 492 |
|--|------------------------|---|


RNAV (GPS) RWY 19
FINGER LAKES RGNL (ØG7)

For uncompensated Baro-VNAV systems, LNAV/VNAV NA below -15°C (5°F) or above 54°C (130°F). Baro-VNAV and VDP NA when using Syracuse altimeter setting. Rwy 19 helicopter visibility reduction below $\frac{3}{4}$ SM NA. DME/DME RNP-0.3 NA. When local altimeter setting not received, use Syracuse altimeter setting and increase all LPV DA to 856 feet, LNAV/VNAV DA to 1226 feet and all MDA 100 feet; increase LPV all Cats visibility $\frac{1}{4}$ SM and LNAV/VNAV all Cats visibility $\frac{1}{2}$ SM.

MISSED APPROACH:
Climb to 1200 then
climbing left turn to
2400 direct JLIET
and hold.

| | | | | |
|------------------------|--|---|--|---------------------------------|
| AWOS-3 120.0 | SYRACUSE APP CON 126.125 269.125 | ROCHESTER APP CON 119.55 269.6 (W-NW) | ELMIRA APP CON ★ 124.3 257.8 (SW-SE) | UNICOM 122.8 (CTAF) ① |
|------------------------|--|---|--|---------------------------------|



| CATEGORY | A | B | C | D |
|--|-----------------------|-----------------------|---|----|
| LPV DA | 770-1 | 279 (300-1) | | NA |
| LNAV/ VNAV DA | 1140-2½ | 649 (700-2½) | | NA |
| LNAV MDA | 1060-1 | 569 (600-1) | | NA |
|  CIRCLING | 1060-1 568 (600-1) | 1180-1 688 (700-1) | | NA |

