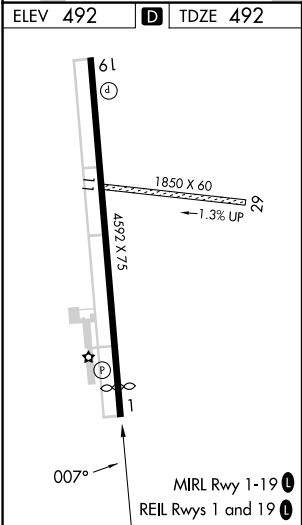
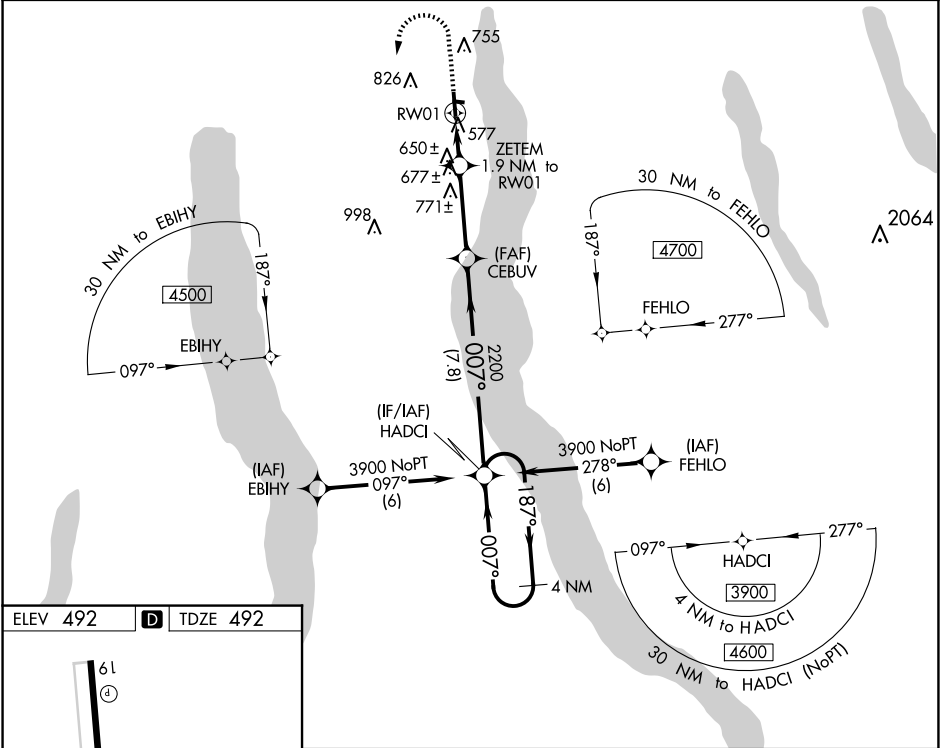


WAAS CH 81936 W01A	APP CRS 007°	Rwy Idg 4199 TDZE 492 Apt Elev 492	RNAV (GPS) RWY 1 FINGER LAKES RGNL (ØG7)
--	------------------------	---	--

⚠ For uncompensated Baro-VNAV systems, LNAV/VNAV NA below -15°C (5°F) or above 54°C (130°F). Baro-VNAV and VDP NA when using Syracuse altimeter setting. Rwy 1 helicopter visibility reduction below ¾ SM NA. DME/DME RNP-0.3 NA. When local altimeter setting not received, use Syracuse altimeter setting and increase all DA 86 feet and all visibility ¼ SM, increase all MDA 100 feet.

MISSED APPROACH: Climb to 1000 then climbing left turn to 3900 direct HADCI and hold, continue climb-in-hold to 3900.

AWOS-3 120.0	SYRACUSE APP CON 126.125 269.125	ROCHESTER APP CON 119.55 269.6 (W-NW)	ELMIRA APP CON ★ 124.3 257.8 (SW-SE)	UNICOM 122.8 (CTAF) Ø
------------------------	--	---	--	--



1000	3900	HADCI	4 NM Holding Pattern
* LNAV only			
* 1.2 NM to 1.9 NM to RWY 1			
ZETEM 2200			
CEBUV 2200			
HADCI 3900			
GP 3.00° TCH 40			
1.2 NM 0.7 NM 3.3 NM 7.8 NM			
CATEGORY	A	B	C D
LPV DA	742-7½	250 (300-7½)	NA
LNAV/VNAV DA	959-1½	467 (500-1½)	NA
LNAV MDA	900-1	408 (500-1)	NA
Ø CIRCLING	980-1 488 (500-1)	1180-1 688 (700-1)	NA