

WAAS CH 56212 W17A	APP CRS 167°	Rwy Idg 8500 TDZE 194 Apt Elev 194
--	------------------------	---

RNAV (GPS) RWY 17
TUNICA MUNI (UTA)

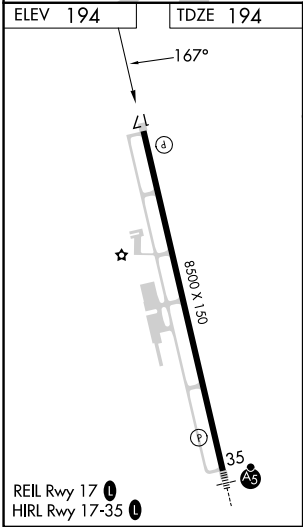
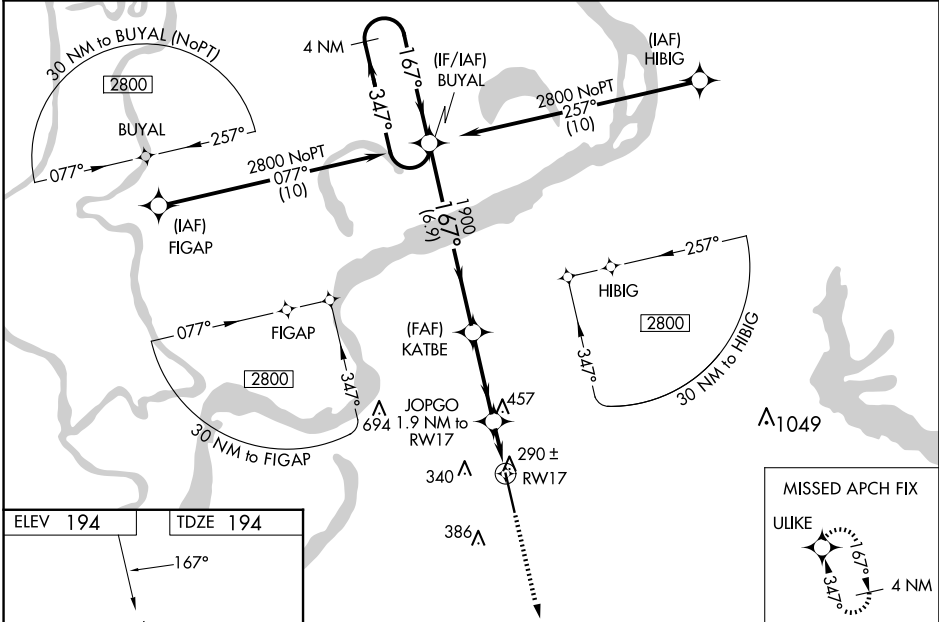
RNP APCH.

⚠

For uncompensated Baro-VNAV systems, LNAV/VNAV NA below -15°C (5°F) or above 42°C (107°F). For inop ALS, increase LNAV/VNAV visibility all Cts to ¾ SM, and LNAV Cts C, D visibility to 1¾ SM. Baro VNAV and VDP NA when using Memphis altimeter setting. When local altimeter setting not received, use Memphis altimeter setting and increase LPV DA to 480, LNAV/VNAV DA to 557, and all MDA 100 feet, increase LNAV/VNAV visibility all Cts to 1 SM, and Circling Cat C visibility to 1¾ SM. For inop ALS when using Memphis altimeter setting, increase LPV all Cts visibility to ¾ SM, LNAV/VNAV all Cts visibility to 1 SM, LNAV Cts C/D visibility to 1¾ SM.

MISSED APPROACH:
Climb to 2800 direct
ULIKE and hold.

AWOS-3 118.075	MEMPHIS APP CON 119.1 291.6	CLNC DEL 118.9	UNICOM 123.0 (CTAF) 0
--------------------------	---------------------------------------	--------------------------	---------------------------------



4 NM Holding Pattern		BUYAL	KATBE	JOPGO	2800 ULIKE	
2800		347°	167°	1900	*LNAV only.	
GP 3.00° TCH 50		6.9 NM	3.3 NM	0.7	1.2 NM to RW17	
CATEGORY		A	B	C	D	
LPV DA		394-¾		200 (200-¾)		
LNAV/VNAV DA		471-¾		277 (300-¾)		
LNAV MDA		640-¾ 446 (500-¾)		640-1⅛ 446 (500-1⅛)		
CIRCLING		680-1 740-1		760-1½ 760-2		
		486 (500-1) 546 (600-1)		566 (600-1½) 566 (600-2)		

SC-4, 10 JUL 2025 to 07 AUG 2025

SC-4, 10 JUL 2025 to 07 AUG 2025