

LOC I-UTA 110.95 Chan 46 (Y)	APP CRS 347°	Rwy Idg 8500 TDZE 194 Apt Elev 194
--------------------------------------------------	------------------------	---------------------------------------------------------------

ILS or LOC RWY 35

TUNICA MUNI (UTA)

▼

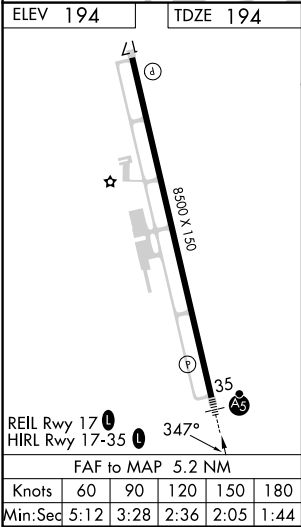
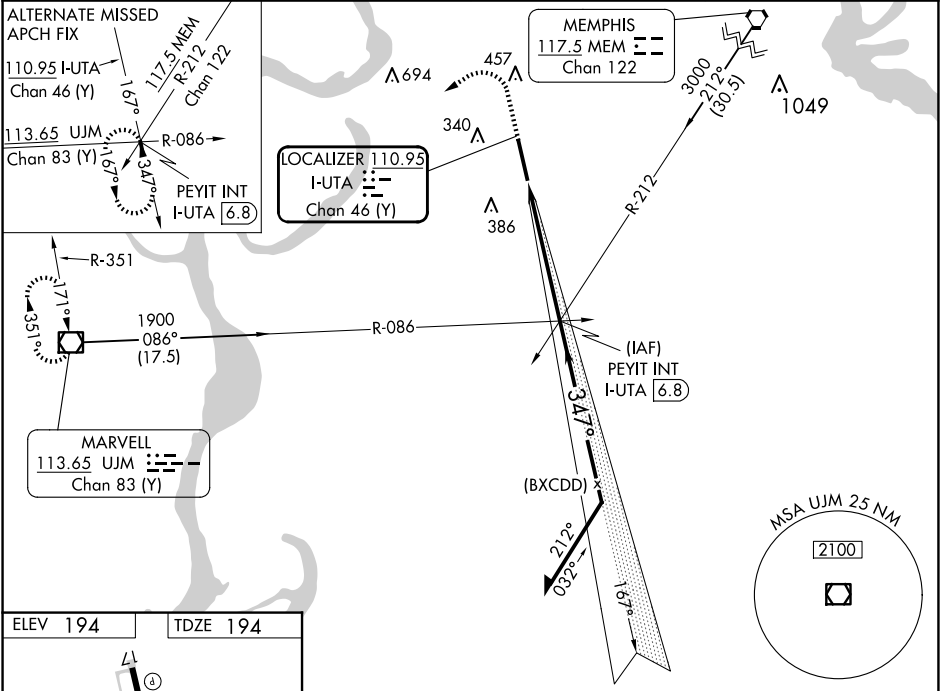
▲

VDP NA with Memphis altimeter setting. When local altimeter not received, use Memphis altimeter setting and increase S-ILS 35 DA to 480 and all MDA 100 feet, increase S-LOC 35 Cats C and D and Circling Cat C visibility ¼ mile. For inoperative MALSR when using Memphis altimeter setting increase S-ILS 35 all Cats visibility to 1 mile.

MALSR

MISSED APPROACH: Climb to 700 then climbing left turn to 1900 direct UJM VOR/DME and hold.

AWOS-3 118.075	MEMPHIS APP CON 119.1 291.6	CLNC DEL 118.9	UNICOM 123.0 (CTAF)
--------------------------	---------------------------------------	--------------------------	-------------------------------



700		1900		UJM		VGSI and ILS glidepath not coincident (VGSI Angle 3.00/TCH 47).			
*LOC only.									
CATEGORY		A		B		C		D	
S-ILS 35		394-1/2 200 (200-1/2)							
S-LOC 35		640-1/2 446 (500-1/2)				640-7/8 446 (500-7/8)			
CIRCLING		680-1 486 (500-1)		740-1 546 (600-1)		760-1 1/2 566 (600-1 1/2)		760-2 566 (600-2)	