

WAAS CH 65645 W18A	APP CRS 178°	Rwy Idg TDZE 1131 Apf Elev 1131
--	------------------------	---

RNAV (GPS) RWY 18

LAMONI MUNI (LWD)

RNP APCH-GPS.

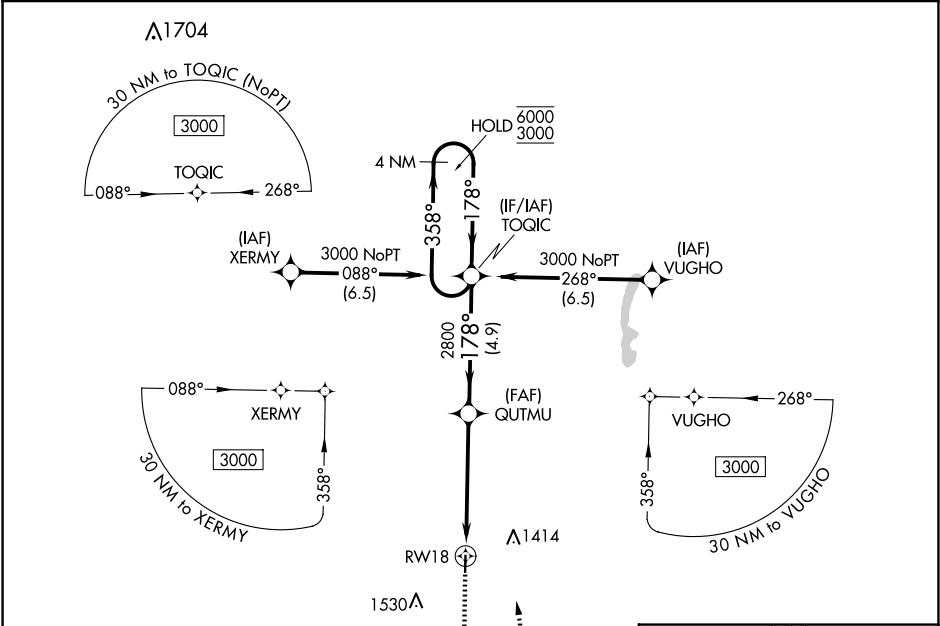
▼

⚠

Circling NA west of Rwy 18-36. Rwy 18 helicopter visibility reduction below $\frac{3}{4}$ SM NA. For uncompensated Baro-VNAV systems, LNAV/VNAV NA below -21°C or above 54°C.

MISSED APPROACH: Climb to 2000, then climbing left turn 3000 direct TOQIC and hold.

ASOS 120.0	MINNEAPOLIS CENTER 125.65 306.95	CTAF 122.9
----------------------	--	----------------------



2000

3000

TOQIC

QUTMU

TOQIC

1 NM to RW18

1 NM

4.1 NM

4.9 NM

178°

358°

178°

2800

6000

3000

GP 3.00°

TCH 50

CATEGORY	A	B	C	D
LPV DA	1381-1 250 (300-1)			
LNAV/VNAV DA	1381-1 250 (300-1)			
LNAV MDA	1500-1 369 (400-1)			
CIRCLING	1520-1 389 (400-1)	1720-1 589 (600-1)	1720-1½ 589 (600-1½)	1720-2 589 (600-2)

ELEV 1131

TDZE 1131

178°

81

36

3400 X 60

MIRL Rwy 18-36

NC-3, 10 JUL 2025 to 07 AUG 2025

NC-3, 10 JUL 2025 to 07 AUG 2025