

ROME, NEW YORK

AL-9515 (FAA)

23334

WAAS CH 42906 W33A	APP CRS 327°	Rwy Idg 11820 TDZE 498 Apt Elev 504
--	------------------------	--

RNAV (GPS) RWY 33
GRIFFISS INTL (RME)

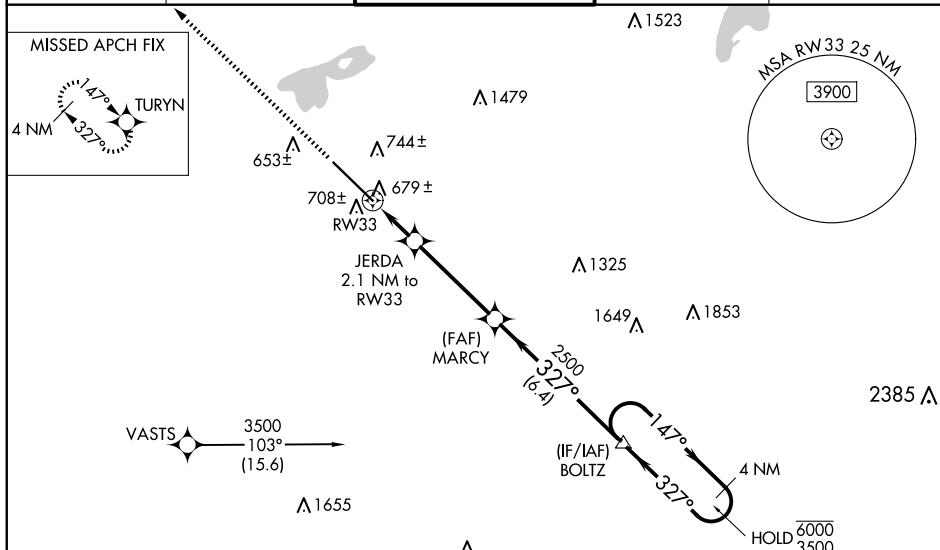
RNP APCH-GPS.

⚠ Circling RNA southwest of Rwy 15-33: Baro-VNAV and VDP NA when using Syracuse altimeter setting. Rwy 33 helicopter visibility reduction below $\frac{3}{4}$ SM NA. For uncompensated Baro-VNAV systems, LNAV/VNAV NA below -23°C or above 54°C. For inop ALBS, increase LPV visibility to $\frac{1}{2}$ SM and LNAV/VNAV visibility to $\frac{1}{3}$ SM and LNAV Cat A/B visibility to 1 SM. For inop ALBS when using Syracuse Intl altimeter setting, increase LNAV Cat A/B visibility to 1 SM. When local altimeter setting not received, use Syracuse Intl altimeter setting; increase LPV DA to 869 feet, increase LNAV/VNAV DA to 1051 feet; increase all MDAs 100 feet and visibility LNAV Cat C/D and Circling Cat B/C visibility $\frac{1}{4}$ SM.

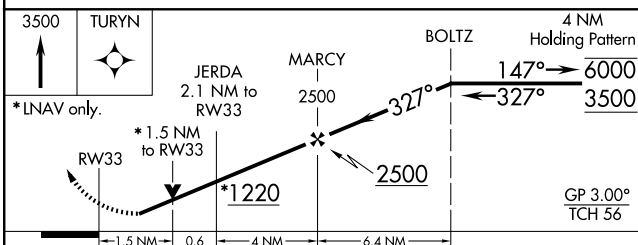
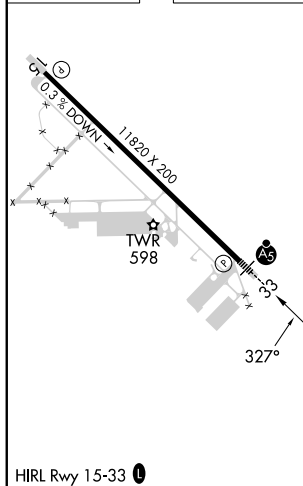
MALSR


MISSED APPROACH.
Climb to 3500 direct
TURYN and hold.

ATIS	SYRACUSE APP CON	GRIFFISS TOWER ★	GND CON	UNICOM
118.7	127.425 290.45	118.1 (CTAF) 0 291.7	121.9	122.95



ELEV	504	D	TDZE	498
------	-----	----------	------	-----



CATEGORY		A	B	C	D
LPV	DA	784- $\frac{3}{4}$ 286 (300- $\frac{3}{4}$)			
INAV/ VNAV	DA	966-1 $\frac{1}{4}$ 468 (500-1 $\frac{1}{4}$)			
INAV	MDA	1040- $\frac{3}{4}$ 542 (600- $\frac{3}{4}$)		1040-1 $\frac{1}{8}$ 542 (600-1 $\frac{1}{8}$)	
 CIRCLING		1140-1 636 (700-1)	1260-1 756 (800-1)	1400-2 $\frac{3}{4}$ 896 (900-2 $\frac{3}{4}$)	1640-3 1136 (1200-3)