

WAAS CH <b>69544</b> <b>W30A</b>	APP CRS <b>296°</b>	Rwy Idg <b>5000</b> TDZE <b>610</b> Apt Elev <b>625</b>
--	------------------------	---

# RNAV (GPS) RWY 30

## NEW COALINGA MUNI (C80)

RNP APCH - GPS.

**T** Circling to Rwy 1, 19 NA at night. For uncompensated  
**A** Baro-VNAV systems, LNAV/VNAV NA below -16°C  
or above 54°C.

**MISSED APPROACH:** Climb to 1200, then climbing right turn to 3000 direct OXOFF and hold.

AWOS-3 <b>119.275</b>	OAKLAND CENTER <b>128.7 307.0</b>	UNICOM <b>122.7 (CTAF) 0</b>
--------------------------	--------------------------------------	---------------------------------

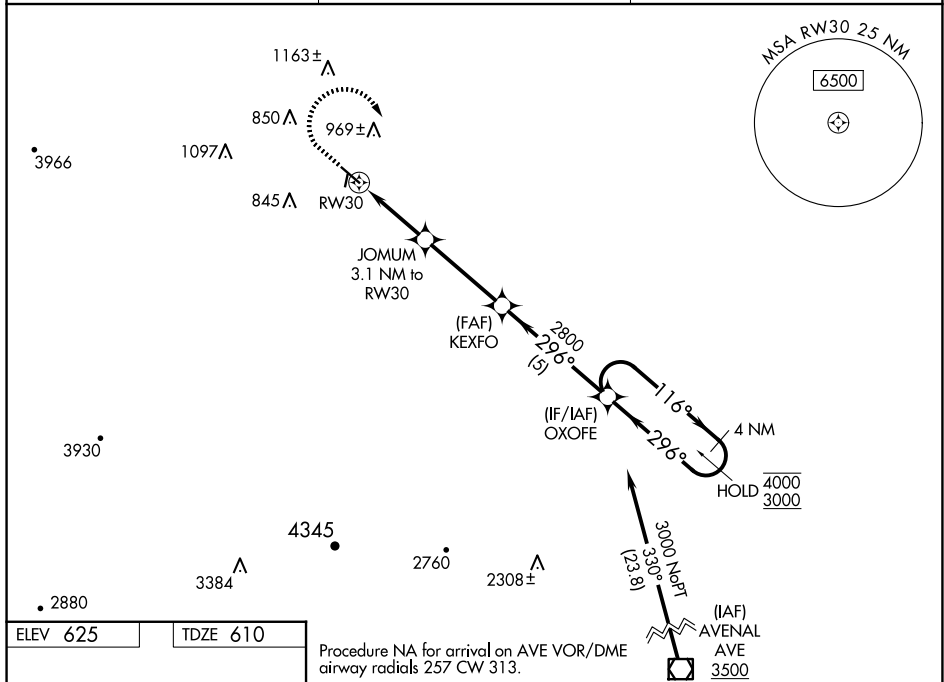


Diagram illustrating the 12-30° holding pattern for RWY 12-30. The pattern is defined by a 1.6 NM radius and a 296° turn. Key points include JOMUM (3.1 NM to RW30), KEXFO (2800), and OXOFE. The pattern is defined by a 1.6 NM radius and a 296° turn. The diagram also shows the 12-30° holding pattern with a 116° turn and a 4 NM holding pattern. The diagram includes a 12-30° holding pattern with a 116° turn and a 4 NM holding pattern.

COALINGA, CALIFORNIA  
Orig 05OCT23

36°10'N-120°18'W

NEW COALINGA MUNI (C80)  
RNAV (GPS) RWY 30

SW-2, 10 JUL 2025 to 07 AUG 2025