

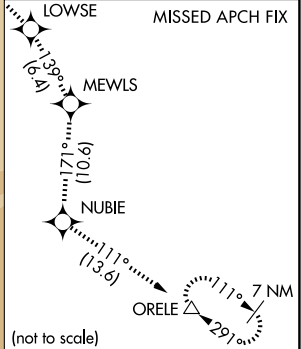
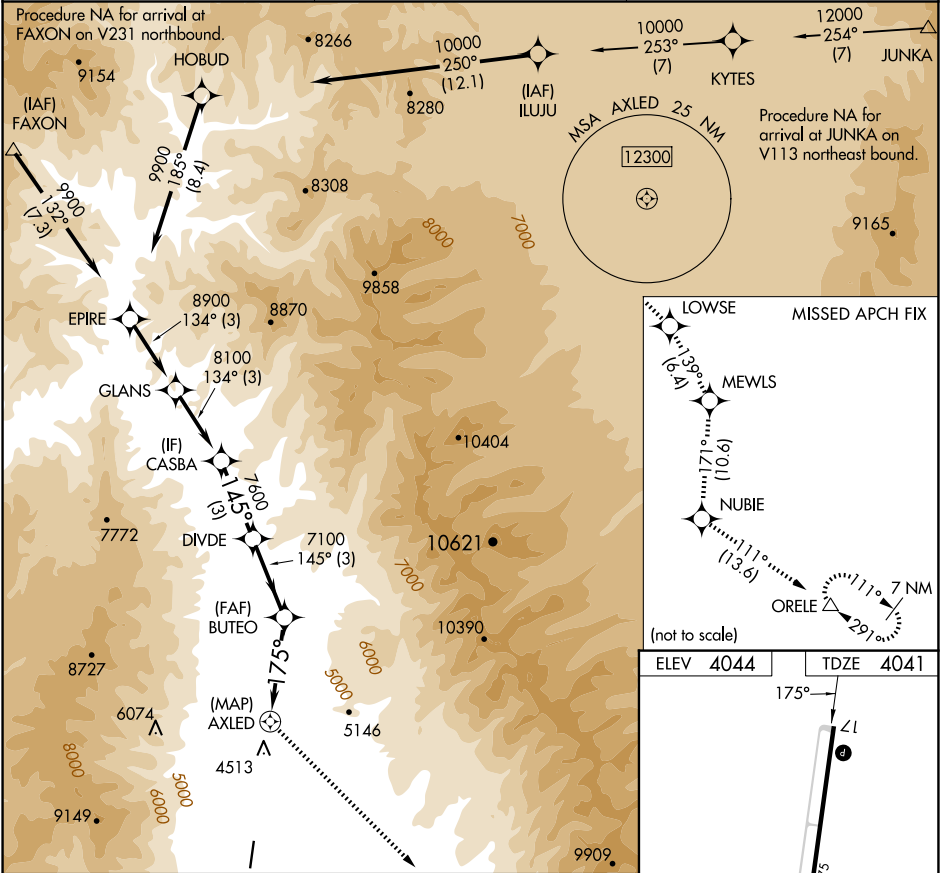
APP CRS	Rwy Ldg	5510
175°	TDZE	4041
	Apt Elev	4044

RNAV (GPS) RWY 17

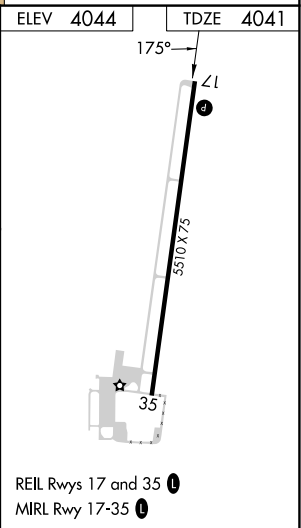
LEMHI COUNTY (SMN)

<p>NA</p> <p>-12°C</p>	<p>DME/DME RNP-0.3 NA. Night landing: Rwy 35 NA.</p> <p>Circling NA for Cats B and C east of Rwy 17-35.</p> <p>Helicopter visibility reduction below ¾ SM NA.</p>	<p>MISSED APPROACH: Climb to 13600 direct LOWSE and track 139° to MEWLS and track 171° to NUBIE and track 111° to ORELE and hold, continue climb-in-hold to 13600.</p>
------------------------	---	--

AWOS-3PT 135.075	SALT LAKE CENTER 132.4 338.3	UNICOM 122.8 (CTAF) 0
---------------------	---------------------------------	--------------------------



13600	LOWSE	MEWLS	BUTOE	DIVDE	CASBA
↑	tr 139°		≤ 3.50°	145°	8100
			TCH 55	7600	
			175°	7100	
			4.3 NM	3.8 NM	3 NM
CATEGORY	A	B	C	D	
RNAV MDA	5740-5	1699 (1700-5)	NA		
CIRCLING	5740-5	1696 (1700-5)	6180-5	2136 (2200-5)	NA



NW-1, 10 JUL 2025 to 07 AUG 2025

NW-1, 10 JUL 2025 to 07 AUG 2025