

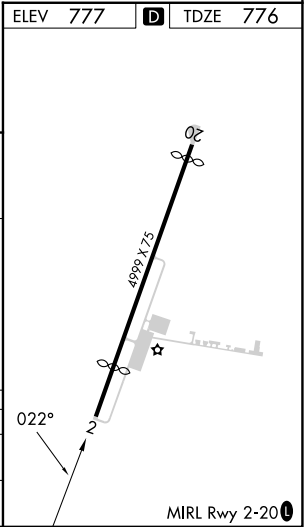
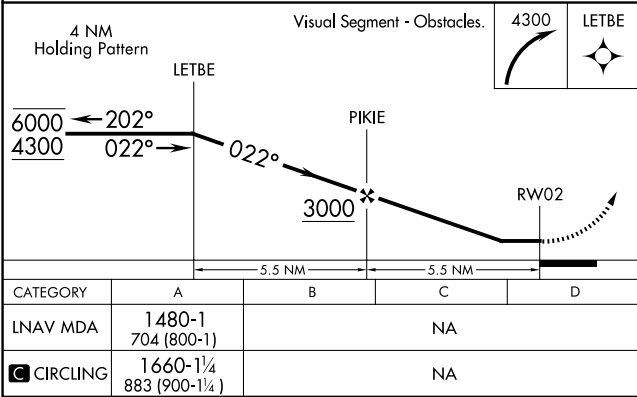
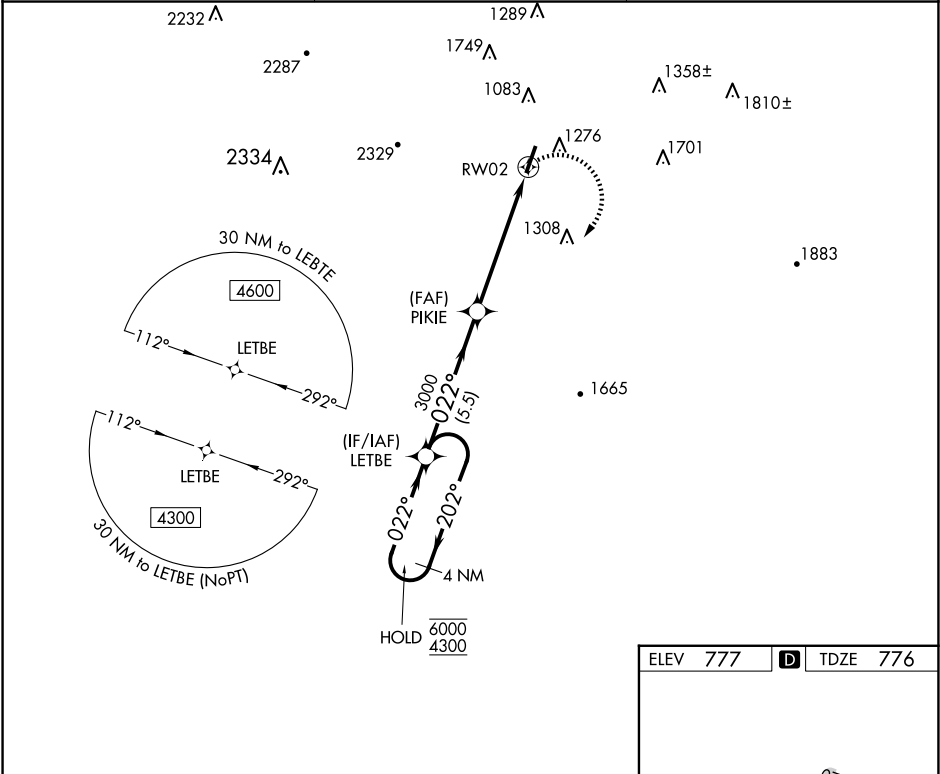
APP CRS	Rwy Idg	4086
022°	TDZE	776
	Apt Elev	777

RNAV (GPS) RWY 2

BARWICK LAFAYETTE (9A5)

RNP APCH - GPS.	MISSED APPROACH: Climbing right turn to 4300 direct LETBE and hold, continue climb-in-hold to 4300.
▼ Procedure NA at night. Rwy 2 helicopter visibility reduction below 1 SM NA. When local altimeter not received, use CHA altimeter setting and increase all MDAs 80 feet.	

AWOS-3 119.775	CHATTANOOGA APP CON ★ 125.1 379.1	UNICOM 122.8 (CTAF) 0
-------------------	--------------------------------------	--------------------------



SE-4, 10 JUL 2025 to 07 AUG 2025

SE-4, 10 JUL 2025 to 07 AUG 2025