

WAAS CH 61031 W09A	APP CRS 086°	Rwy Ldg TDZE Apt Elev	4502 6046 6056
----------------------------------------	------------------------	-----------------------------	-------------------------------------------

RNAV (GPS) RWY 9

SPANISH PEAKS AIRFIELD (4V1)

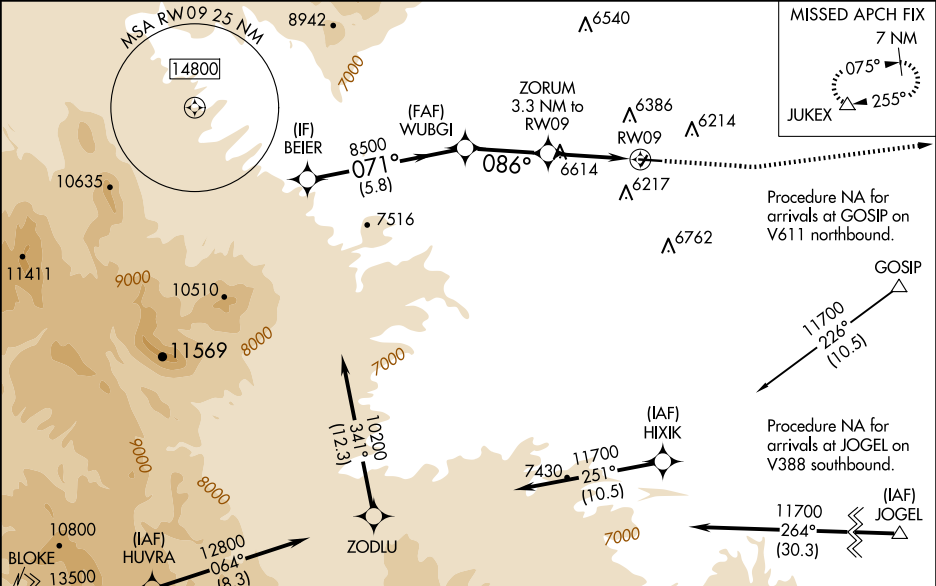
▼

▲ NA

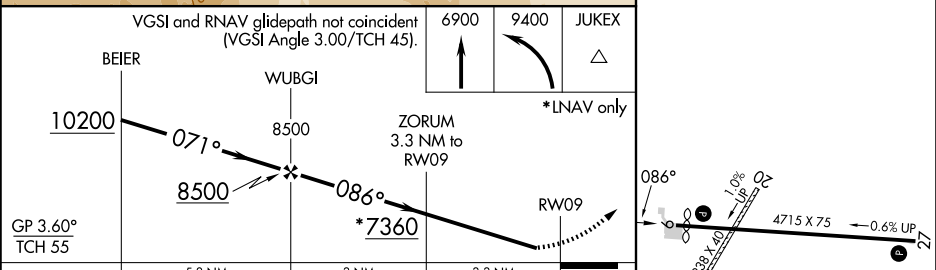
Baro-VNAV NA when using Trinidad altimeter setting. For uncompensated Baro-VNAV systems, procedure NA below -26°C (-14°F) or above 36°C (98°F). DME/DME RNP-0.3 NA. Helicopter visibility reduction below 1 SM NA.
Rwy 9 Straight-in and Circling minimums NA at night. When local altimeter setting not received, use Trinidad altimeter setting and increase all DA 119 feet and MDA 120 feet; increase LPV all Cats visibility 1⁄8 mile and LNAV/VNAV all Cats visibility 3⁄8 mile, LNAV Cats A-B and Circling Cat B visibility 1⁄4 mile, LNAV Cat C visibility 1⁄2 mile.

MISSED APPROACH:
Climb to 6900 then climbing left turn to 9400 direct JUKEX and hold.

AWOS-3PT 123.6	DENVER CENTER 128.375 379.95	UNICOM 122.8 (CTAF) 1
--------------------------	----------------------------------------	---------------------------------



ELEV 6056	TDZE 6046
-----------	-----------



CATEGORY	A	B	C	D
LPV DA	6347-1	301 (300-1)		NA
LNAV/VNAV DA	6606-1 5⁄8	560 (600-1 5⁄8)		NA
LNAV MDA	6880-1 834 (900-1)	6880-1 1⁄4 834 (900-1 1⁄4)	6880-2 1⁄2 834 (900-2 1⁄2)	NA
CIRCLING	6880-1 1⁄4 824 (900-1 1⁄4)		7080-3 1024 (1100-3)	NA