

WAAS CH 86831 W27A	APP CRS 266°	Rwy Ldg TDZE 6037 Apt Elev 6056
--	------------------------	---

RNAV (GPS) RWY 27

SPANISH PEAKS AIRFIELD (4V1)

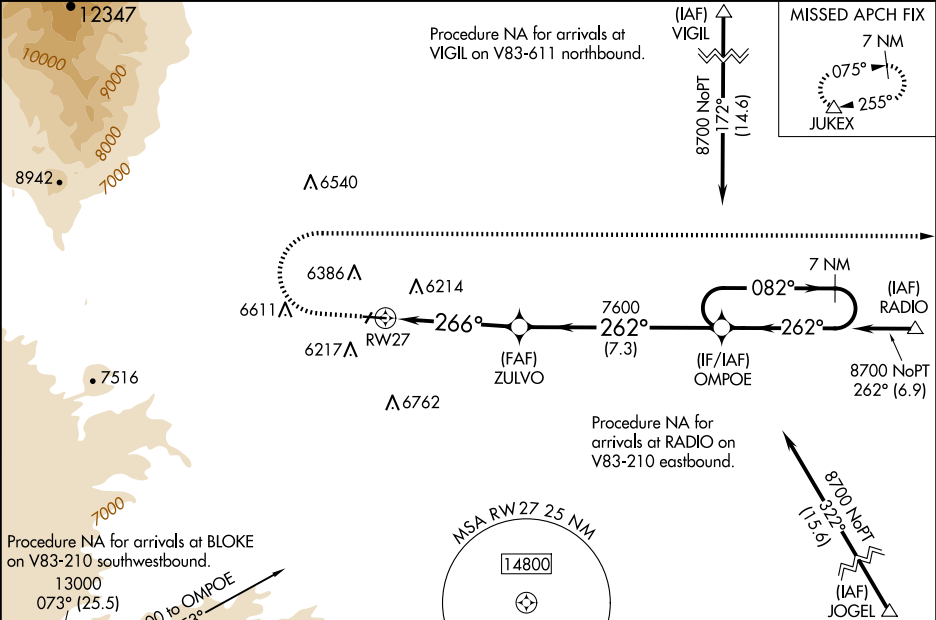
⚠

NA

For uncompensated Baro-VNAV systems, LNAV/VNAV NA below -26°C (-14°F) or above 48°C (118°F). DME/DME RNP-0.3 NA. When local altimeter setting not received, use Trinidad altimeter setting and increase all DA 119 feet and all MDA 120 feet; increase LPV all Cnts visibility ¼ mile, increase LNAV/VNAV all Cnts and LNAV Cnts C/D visibility ⅜ mile. Baro-VNAV and VDP NA when using Trinidad altimeter setting.

MISSED APPROACH: Climb to 6800 then climbing right turn to 9400 direct JUKEX and hold.

AWOS-3PT 123.6	DENVER CENTER 128.375 379.95	UNICOM 122.8 (CTAF) 0
--------------------------	--	---------------------------------



ELEV 6056		D		TDZE 6037	
6800		9400		JUKEX	
*LNAV only		*1.4 NM to RW27		7 NM Holding Pattern	
RW27		ZULVO		OMPOE	
1.4 NM		3.4 NM		7.3 NM	
CATEGORY		A		B	
LPV DA		6287-1		250 (300-1)	
LNAV/VNAV DA		6525-1⅓		488 (500-1⅓)	
LNAV MDA		6520-1		483 (500-1)	
GP 3.00° TCH 45		7080-3		7120-3	
CIRCLING		6720-1		664 (700-1)	
		1024 (1100-3)		1064 (1100-3)	