

WAAS CH <b>99310</b> <b>W18B</b>	APP CRS <b>179°</b>	Rwy Idg TDZE <b>55</b> Apt Elev <b>55</b>
--	------------------------	---

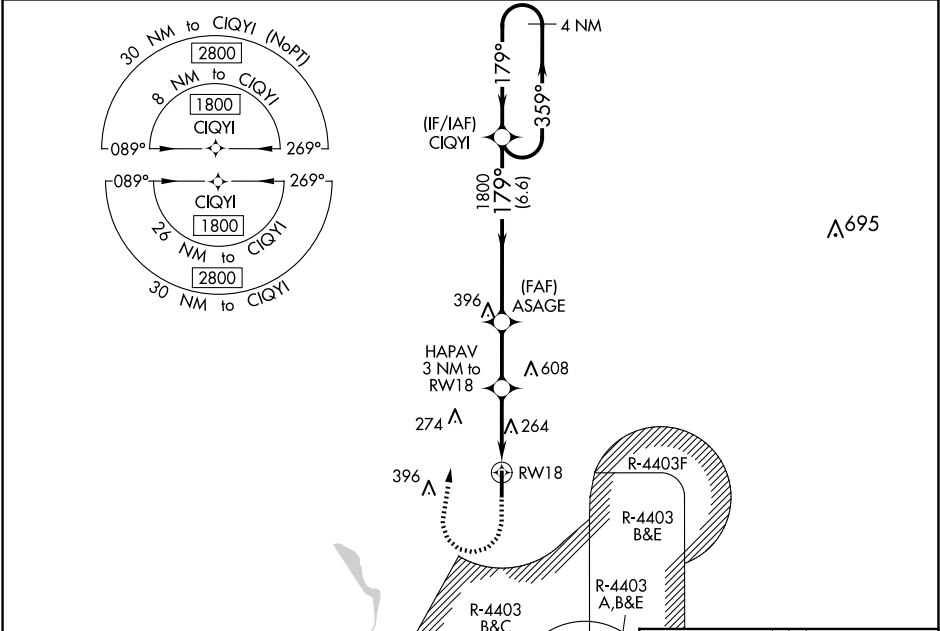
RNAV (GPS) Z RWY 18

PICAYUNE MUNI (MJD)

**⚠** For uncompensated Baro-VNAV systems, LNAV/VNAV NA below -15°C (5°F) or above 54°C (130°F).  
Baro-VNAV and VDP NA when using Stennis Intl altimeter setting. DME/DME RNP-0.3 NA.  
Helicopter visibility reduction below 3/4 SM NA. Procedure NA when R-4403 B, C, or E is active.  
When local altimeter setting not received, used Stennis Intl altimeter setting: increase LPV DA to 377 and visibility all Cats 1/8 mile; increase LNAV/VNAV DA to 621 and visibility all Cats 1/8 mile; increase all MDA 40 feet and Circling Cat C visibility 1/4 mile.

**MISSED APPROACH:**  
Climb to 1200, then climbing right turn to 1800 direct CIQYI and hold.

AWOS-3PT <b>119.075</b>	GULFPORT APP CON★ <b>124.6 354.1</b>	UNICOM <b>122.8 (CTAF) 0</b>
----------------------------	---	---------------------------------



		ELEV 55		TDZE 55	
		4 NM Holding Pattern		ASAGE 1800	
		1800 ← 359° → 179° → 1800		HAPAV 3 NM to RW18	
		GP 3.00° TCH 36		*1.3 NM to RW18	
		6.6 NM		*1040	
		2.4 NM		1.7 NM	
		1.3 NM		RW18	
CATEGORY		A	B	C	D
LPV DA		343-1		288 (300-1)	
LNAV/VNAV DA		587-1 7/8		532 (600-1 7/8)	
LNAV MDA		520-1	465 (500-1)	520-1 3/8	465 (500-1 3/8)
CIRCLING		520-1 465 (500-1)	580-1 525 (600-1)	700-1 3/4 645 (700-1 3/4)	960-3 905 (1000-3)
		MIRL Rwy 18-36 0			

SC-4, 10 JUL 2025 to 07 AUG 2025

SC-4, 10 JUL 2025 to 07 AUG 2025