

WAAS
CH **42909**
W36A

APP CRS
359°

Rwy Idg
TDZE **54**
Apt Elev **55**

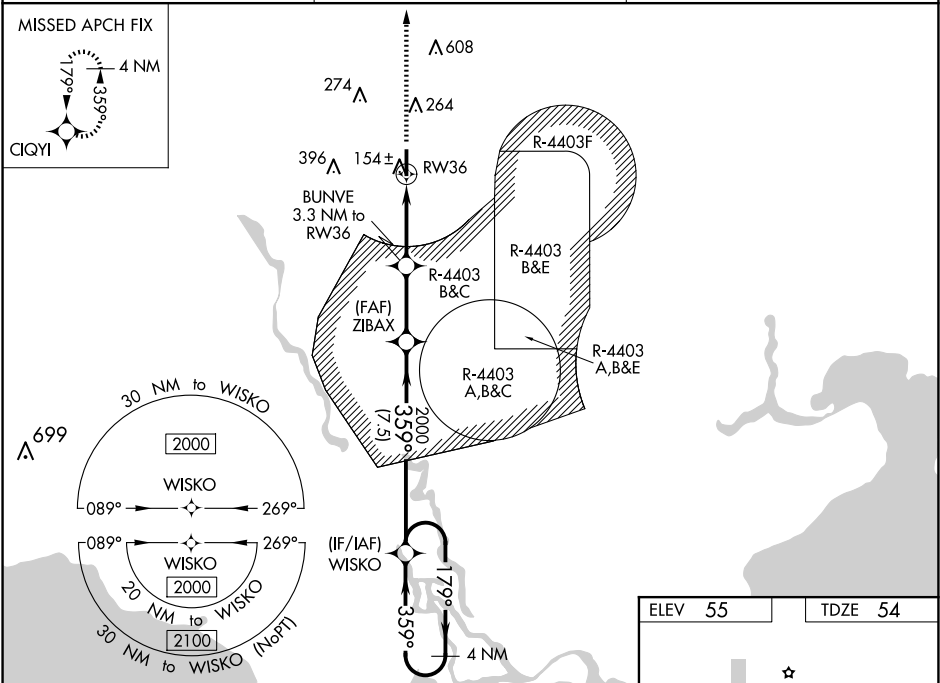
RNAV (GPS) RWY 36



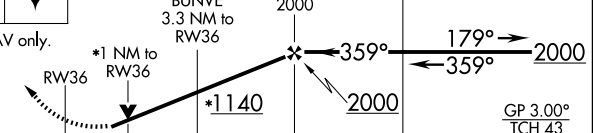
PICAYUNE MUNI (MJD)

For uncompensated Baro-VNAV systems, LNAV/VNAV NA below -1.5°C (5°F) or above 54°C (130°F). Baro-VNAV and VDP NA when using Stennis Intl altimeter setting. DME/DME RNP-0.3 NA. Helicopter visibility reduction below ¾ SM NA. Procedure NA when R-4403 A, B, C, or E is active. When local altimeter setting not received, use Stennis Intl altimeter setting: increase LPV DA to 338 and all Cats visibility ½ mile; increase LNAV/VNAV DA to 374 and all Cats visibility ½ mile; increase all MDA 40 feet and LNAV Cats C and D visibility ½ mile, and Circling Cat C visibility ¼ mile.

MISSED APPROACH: Climb to 1800 direct CIQYI and hold.

| | | |
|----------------------------|--|---------------------------------|
| AWOS-3PT 119.075 | GULFPORT APP CON ★ 124.6 354.1 | UNICOM 122.8 (CTAF) 0 |
|----------------------------|--|---------------------------------|



| | | | | | | | | | |
|---|--|---|--|----------------------|--|------------------------------|--|-----------------------|--|
| 1800 | | CIQYI | | ZIBAX | | WSKO | | 4 NM Holding Pattern | |
|  | |  | | 2000 | | 2000 | | | |
| *LNAV only. | | *1 NM to RW36 | | *1 140 | | 359° | | 179° | |
|  | | BUNVE 3.3 NM to RW36 | | | | | | | |
| RW36 | | 2.3 NM | | 2.7 NM | | 7.5 NM | | | |
| CATEGORY | | A | | B | | C | | D | |
| LPV DA | | 304-7/8 | | 250 (300-7/8) | | | | | |
| LNAV/VNAV DA | | 340-1 | | 286 (300-1) | | | | | |
| LNAV MDA | | 420-1 | | 366 (400-1) | | | | | |
| CIRCLING | | 480-1 425 (500-1) | | 580-1 525 (600-1) | | 700-1 3/4 645 (700-1 3/4) | | 960-3 905 (1000-3) | |
| | | | | | | | | MIRL Rwy 18-36 | |

81

5000 X 75

36

359°