

APP CRS	Rwy Ldg	5032
309°	TDZE	5723
	Apt Elev	5737

RNAV (GPS) RWY 31
ESCALANTE MUNI (1L7)

ESCALANTE MUNI (1L7)

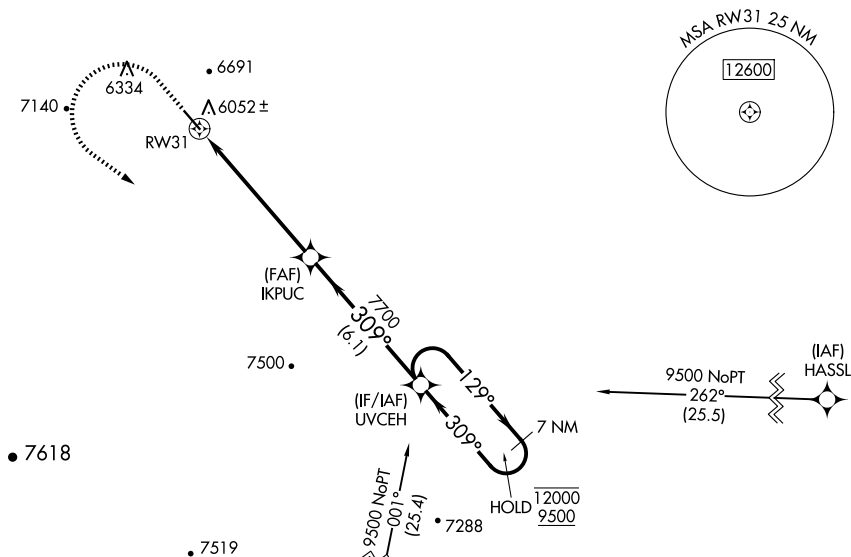
RNP APCH - GPS.

T Baro-VNAV NA. Rwy 31 helicopter visibility
A NA reduction below $\frac{3}{4}$ SM NA. Circling NA
northeast of Rwy 13-31. Procedure NA at
night. Use PGA altimeter setting.

MISSED APPROACH: Climb to 7600 then climbing left turn to 9500 direct UVCEH and hold, continue climb-in-hold to 9500.
 *Missed approach requires minimum climb of 328 feet per NM to 8000.
 #Missed approach requires minimum climb of 320 feet per NM to 8020.

PGA ASOS
120.625

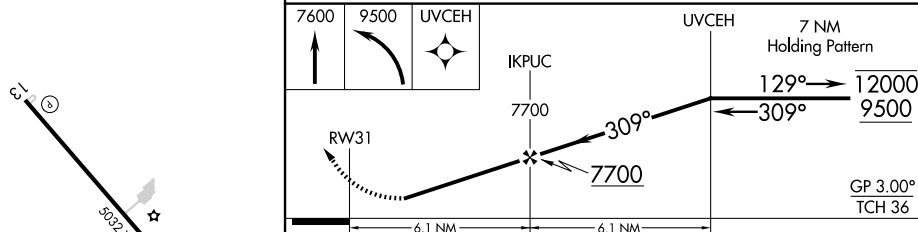
SALT LAKE CENTER
133.6 269.25

UNICOM
122.8 (CTAF) **L**

ELEV 5737

TDZE 5723

(IAF) 
PASCO



MIRL Rwy 13-31 **L**
REIL Rwys 13 and 31

ESCALANTE, UTAH
Amdt 1 12JUN25

37°45'N-111°34'W

ESCALANTE MUNI (1L7)

RNAV (GPS) RWY 31

SW-4, 10 JUL 2025 to 07 AUG 2025

SW-4, 10 JUL 2025 to 07 AUG 2025