

WAAS CH 63221 W17A	APP CRS 168°	Rwy Ldg TDZE Apt Elev	6300 5005 5022
--	------------------------	-----------------------------	---

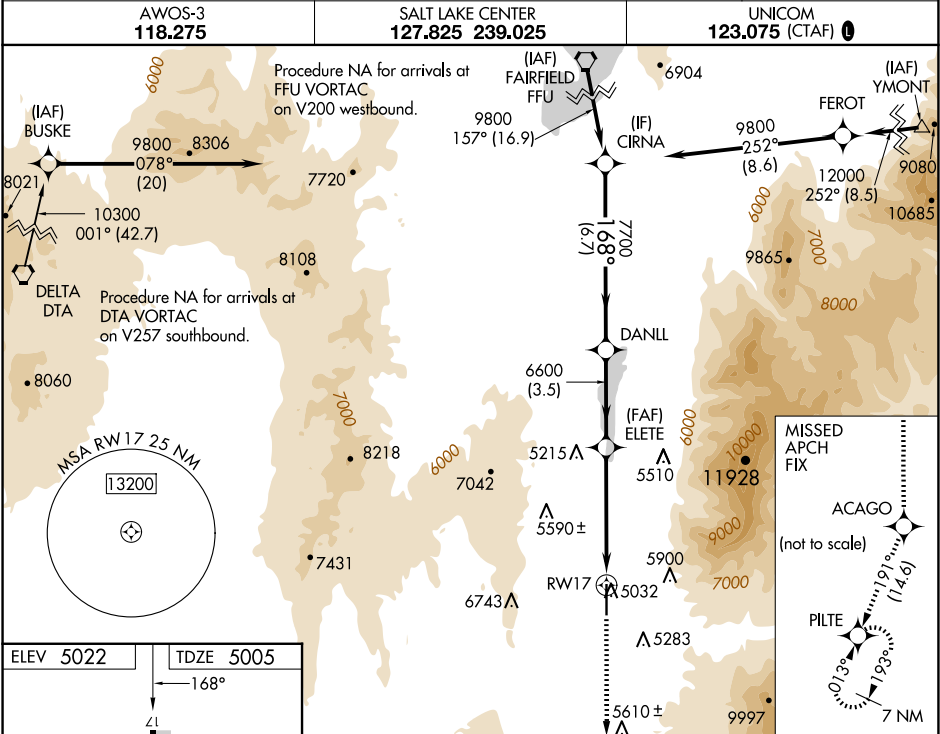
RNAV (GPS) RWY 17

NEPHI MUNI (U14)

RNP APCH - GPS.

Baro-VNAV NA when using Provo Muni altimeter setting. For uncompensated Baro-VNAV systems, LNAV/VNAV NA below -24°C or above 12°C. When local altimeter setting not received, use Provo altimeter setting: increase LPV DA to 5577 feet and visibility all Cats ½ SM; increase LNAV/VNAV DA to 5836 feet and visibility all Cats ½ SM; increase all MDAs 160 feet and LNAV and Circling visibilities Cats A/B ½ SM. Circling Cat C NA. VDP NA with Provo Muni altimeter setting.

MISSED APPROACH:
Climb to 11400 direct ACAGO and on track 191° to PILTE and hold.



ELEV 5022

TDZE 5005

168°

ZI

0.0% Up

6300

100

35

MIRL Rwy 17-35

REIL Rwy 17 and 35

11400	ACAGO	tr 191°	PILTE	CIRNA		
*LNAV only.		*2.4 NM to RW17		GP 3.00° TCH 40°		
RW17		2.4 NM	2.5 NM	3.5 NM	6.7 NM	
ELETE		DANLL		168°		
6600		6600		7700		
6600		6600		9800		
CATEGORY	A		B	C	D	
LPV DA	5433-1½		428 (500-1½)			
LNAV/ VNAV DA	5692-2½		687 (700-2½)			
LNAV MDA	5800-1 795 (800-1)	5800-1¼ 795 (800-1¼)	5800-2½		795 (800-2½)	
CIRCLING	5800-1 778 (800-1)	5800-1¼ 778 (800-1¼)	6920-3 1898 (1900-3)		NA	