

APP CRS
126°

Rwy Idg
TDZE
Apt Elev

N/A
N/A
5945

RNAV (GPS)-A
HOPKINS FLD (AIB)

RNP APCH-GPS.

▼

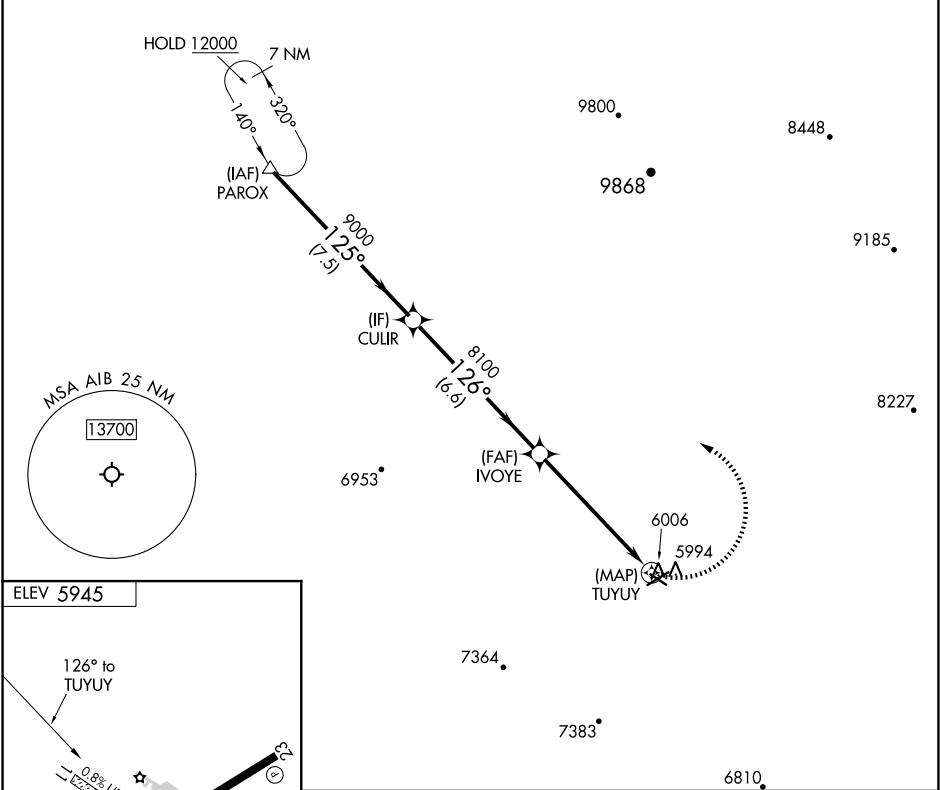
⚠

Circling NA to Rwys 11 and 29. Circling Rwy 23 NA at night.
When local altimeter setting not received, procedure NA.

MISSED APPROACH: Climbing left turn to 12000 direct PAROX and hold, continue climb-in-hold to 12000.

AWOS-3 132.525	DENVER CENTER 127.1	UNICOM 122.8 (CTAF) 0
-------------------	------------------------	--------------------------

All arrivals on V244 descend to 12000 in PAROX holding pattern before departing PAROX.
NoPT for arrival at PAROX on V391 southbound.



ELEV 5945

126° to TUYUY

0.8% UP

5212 X 75

4000 X 80

0.9% UP

MIRL Rwy 5-23 0
REIL Rws 5 and 23 0

PAROX				12000	PAROX		
				125°	△		
				9000			
				126°			
				8100			
					TUYUY		
				7.5 NM	6.6 NM	5.8 NM	
CATEGORY	A	B	C	D			
CIRCLING	6320-1	6400-1	6800-2½	NA			
	375 (400-1)	455 (500-1)	855 (900-2½)				