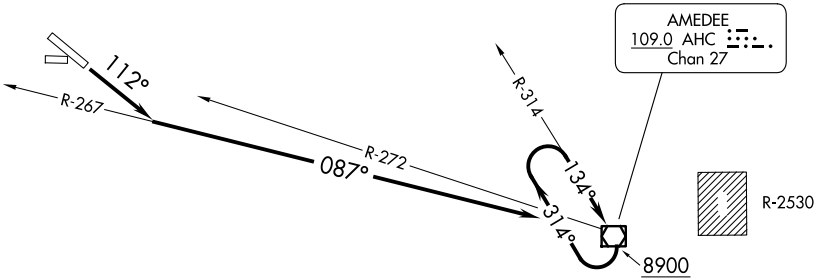


OAKLAND CENTER
128.8 285.5
CTAF
122.8



TAKEOFF MINIMUMS
Rwys 7, 25, 29: NA- obstacles.
Rwy 11: Standard with minimum climb of 410’ per NM to 6000
or 1900-2½ for climb in visual conditions.

NOTE: Chart not to scale.

DEPARTURE ROUTE DESCRIPTION

TAKEOFF RUNWAY 11: Climb via 112° heading and AHC R-267 to AHC VOR/DME, Thence. . . .
Or climb in visual conditions to cross Susanville Muni Airport eastbound at or above 6000, then via AHC R-272 to AHC VOR/DME, Thence. . . .
. . . .cross AHC VOR/DME at or above 8900’. Climb in AHC holding pattern to depart AHC VOR/DME at or above 14000 before proceeding on course.

SW-2, 10 JUL 2025 to 07 AUG 2025

SW-2, 10 JUL 2025 to 07 AUG 2025