

APP CRS  
004°

Rwy Ldg TDZE  
Apt Elev

N/A  
N/A  
3636

RNAV (GPS)-A  
RAVALLI COUNTY (HRF')

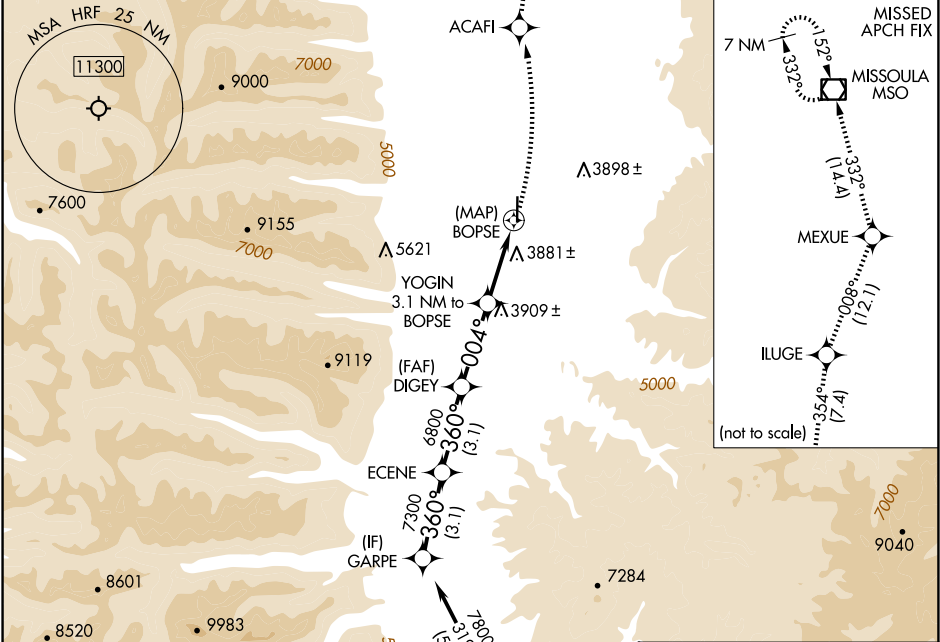
RNP APCH-GPS.

▼

Circling to Rwy 35 NA at night. Rwy 35 helicopter visibility reduction below 1 SM NA.

MISSED APPROACH: Climbing left turn to 11200 direct ACAFI and on track 354° to ILUGE and track 008° to MEXUE and track 332° to MISSOULA VOR/DME and hold.

AWOS-3P 119.825	SALT LAKE CENTER 132.4 338.3	UNICOM 122.8 (CTAF) 0
--------------------	---------------------------------	--------------------------



ELEV 3636

CATEGORY	A	B	C	D
CIRCLING	4240-1 604 (700-1)	4260-1 624 (700-1)	NA	

MIRL Rwy 17-35 0

5200 X 75

35

004°