

WAAS CH 72822 W03A	APP CRS 029°	Rwy Idg TDZE Apt Elev	6501 246 246
--	------------------------	-----------------------------	---

RNAV (GPS) RWY 3

RALEIGH EXEC JETPORT AT SANFORD-LEE COUNTY (TTA)

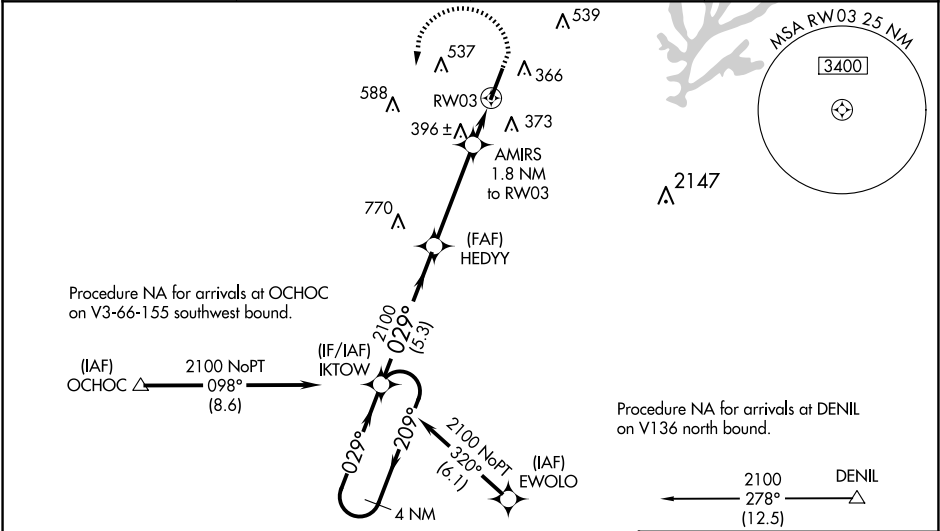
Baro-VNAV NA when using Raleigh/Durham altimeter setting. For uncompensated Baro-VNAV systems, LNAV/VNAV NA below -15°C (5°F) or above 54°C (130°F). DME/DME RNP-0.3 NA.

When local altimeter setting not received, use Raleigh/Durham altimeter setting and increase all DA 81 feet and all MDA 100 feet. Increase LNAV/VNAV all Cats visibility to 1½ mile, LNAV Cats C and D visibility to 1 mile, and Circling Cat C visibility to 2 mile and Cat D visibility to 2¾ mile. For inop MALS, increase LNAV/VNAV all Cats visibility to 1¼ mile and LNAV Cats C and D visibility to 1½ mile. For inop MALS when using Raleigh/Durham altimeter setting, increase LPV all Cats visibility to ¾ mile and LNAV Cats C and D visibility to 1½ mile. VDP NA when using Raleigh/Durham altimeter setting.

MALS

MISSED APPROACH:
Climb to 1300 then climbing left turn to 2100 direct IKTOW and hold.

AWOS-3 120.625	RALEIGH APP CON 125.3 353.675	UNICOM 123.075 (CTAF) 0	GCO 135.075
--------------------------	---	-----------------------------------	-----------------------



ELEV 246		TDZE 246	
----------	--	----------	--

4 NM Holding Pattern

CATEGORY	A	B	C	D
LPV DA	446-½ 200 (200-½)			
LNAV/VNAV DA	634-¾ 388 (400-¾)			
LNAV MDA	660-½ 414 (500-½)	660-¾ 414 (500-¾)		
CIRCLING	760-1 514 (600-1)	820-1 574 (600-1)	840-1½ 594 (600-1½)	960-2¼ 714 (800-2¼)

REIL Rwy 21 0
HIRL Rwy 3-21 0

SE-2, 10 JUL 2025 to 07 AUG 2025

SE-2, 10 JUL 2025 to 07 AUG 2025