

WAAS  
CH **86522**  
**W21A**

APP CRS  
**209°**

Rwy Idg  
TDZE  
Apt Elev

**6501**  
**230**  
**247**

**RNAV (GPS) RWY 21**

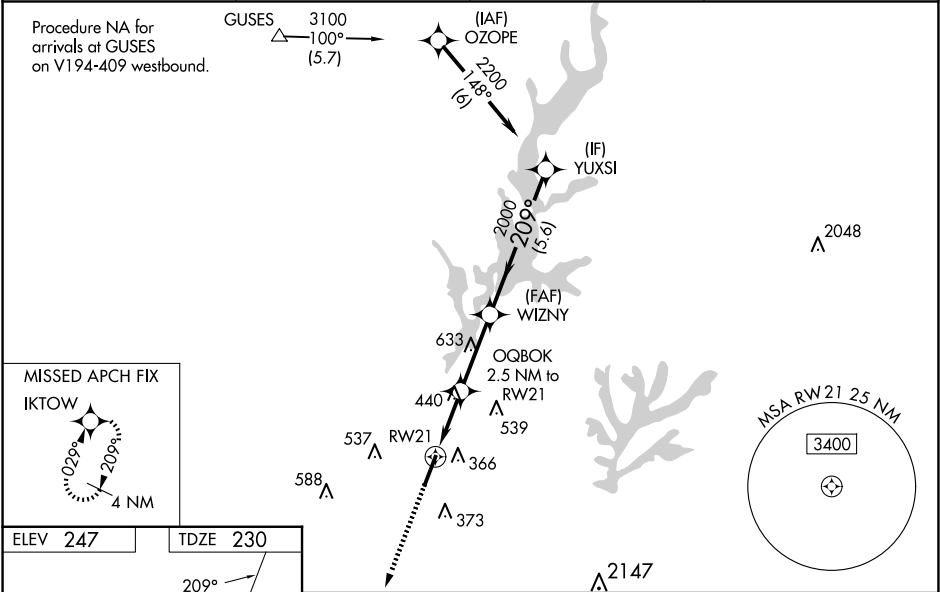
RALEIGH EXEC JETPORT AT SANFORD-LEE COUNTY (TTA)

RNP APCH.

Baro-VNAV NA when using Raleigh/Durham altimeter setting. For uncompensated Baro-VNAV systems, LNAV/VNAV NA below -15°C or above 54°C. When local altimeter setting not received, use Raleigh/Durham altimeter setting and increase all DA 81 feet and all MDA 100 feet. Increase LPV all Cats visibility to 1¼ SM, LNAV/VNAV all Cats visibility to 1½ SM, LNAV Cats C and D visibility to 1½ SM, and Circling Cat C visibility to 2 SM and Cat D visibility to 2¾ SM. Rwy 21 helicopter visibility reduction below ¾ SM NA. VDP NA when using Raleigh/Durham altimeter setting.

MISSED APPROACH:  
Climb to 2100 direct  
IKTOW and hold.

AWOS-3 <b>120.625</b>	RALEIGH APP CON <b>125.3 353.675</b>	UNICOM <b>123.075 (CTAF) 0</b>	GCO <b>135.075</b>
--------------------------	---	-----------------------------------	-----------------------



CATEGORY	A	B	C	D
LPV DA	530-1		300 (300-1)	
LNAV/VNAV DA	518-7⁄8		288 (300-7⁄8)	
LNAV MDA	700-1	470 (500-1)	700-1¾	470 (500-1¾)
CIRCLING	760-1 513 (600-1)	820-1 573 (600-1)	840-1½ 593 (600-1½)	960-2¼ 713 (800-2¼)