

LOC/DME I-TTA 110.75 Chan 44 (Y)	APP CRS 029°	Rwy Idg 6501 TDZE 246 Apt Elev 246
--	------------------------	---

ILS Z or LOC Z RWY 3

RALEIGH EXEC JETPORT AT SANFORD-LEE COUNTY (TTA)

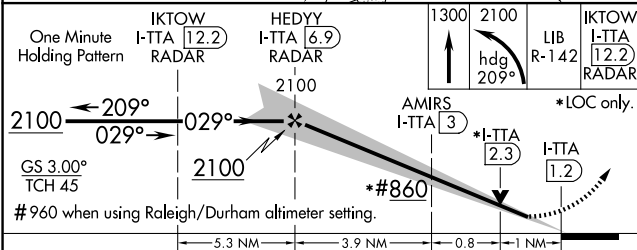
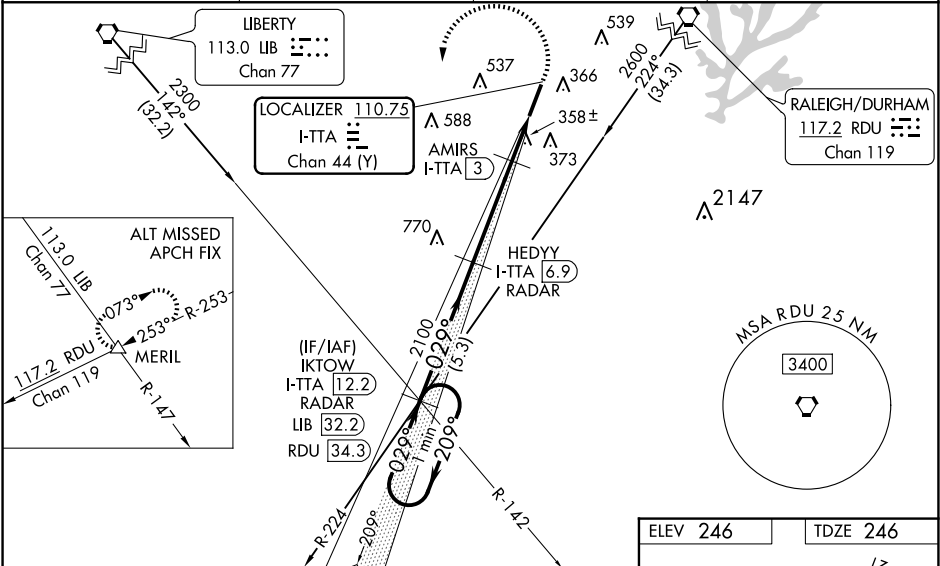
DME required for LOC only.

When local altimeter setting not received, use Raleigh/Durham altimeter setting: increase DA to 527 feet; increase all MDAs 100 feet and S-LOC 3 Cats C and D visibility to 1½ SM, increase Circling Cat C visibility to 2 SM and Cat D to 2¾ SM; AMIRS FIX MINIMUMS: increase S-LOC 3 Cats C and D visibility to 1 SM, and Circling Cat C visibility to 2 SM and Cat D visibility to 2¾ SM. For inop ALS, increase S-LOC 3 Cats C and D visibility to 1¾ SM. AMIRS FIX MINIMUMS: increase S-LOC 3 Cats C and D visibility to 1 SM. For inop ALS when using Raleigh/Durham altimeter setting, increase S-ILS 3 all Cats visibility to ¾ SM and S-LOC 3 Cats C and D visibility to 2 SM. AMIRS FIX MINIMUMS: increase S-LOC 3 Cats C and D visibility to 1½ SM. VDP NA when using Raleigh/Durham altimeter setting.

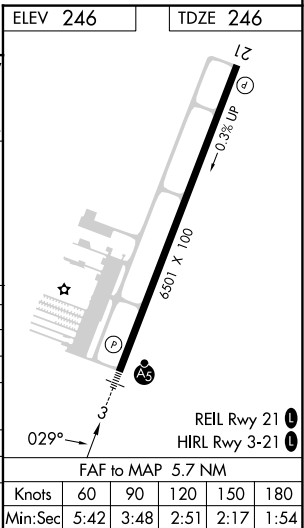
MALSRL
A5

MISSED APPROACH:
Climb to 1300 then climbing left turn to 2100 on heading 209° and LIB VORTAC R-142 to IKTOW INT/I-TTA 12.2 DME/RADAR and hold.

AWOS-3 120.625	RALEIGH APP CON 125.3 353.675	UNICOM 123.075 (CTAF) 0	GCO 135.075
--------------------------	---	-----------------------------------	-----------------------



CATEGORY	A	B	C	D
S-ILS 3		446-½	200 (200-½)	
S-LOC 3	860-½	614 (700-½)	860-1¾	614 (700-1¾)
CIRCLING	860-1	614 (700-1)	860-1¾ 614 (700-1¾)	960-2¼ 714 (800-2¼)
AMIRS FIX MINIMUMS				
S-LOC 3	620-½	374 (400-½)	620-⅝	374 (400-⅝)
CIRCLING	760-1 514 (600-1)	820-1 574 (600-1)	840-1½ 594 (600-1½)	960-2¼ 714 (800-2¼)



ILS Z or LOC Z RWY 3

SE-2, 10 JUL 2025 to 07 AUG 2025

SE-2, 10 JUL 2025 to 07 AUG 2025