

WAAS CH 60948 W20A	APP CRS 201°	Rwy Idg 4000 TDZE 75 Apt Elev 75
--	------------------------	---

RNAV (GPS) RWY 20

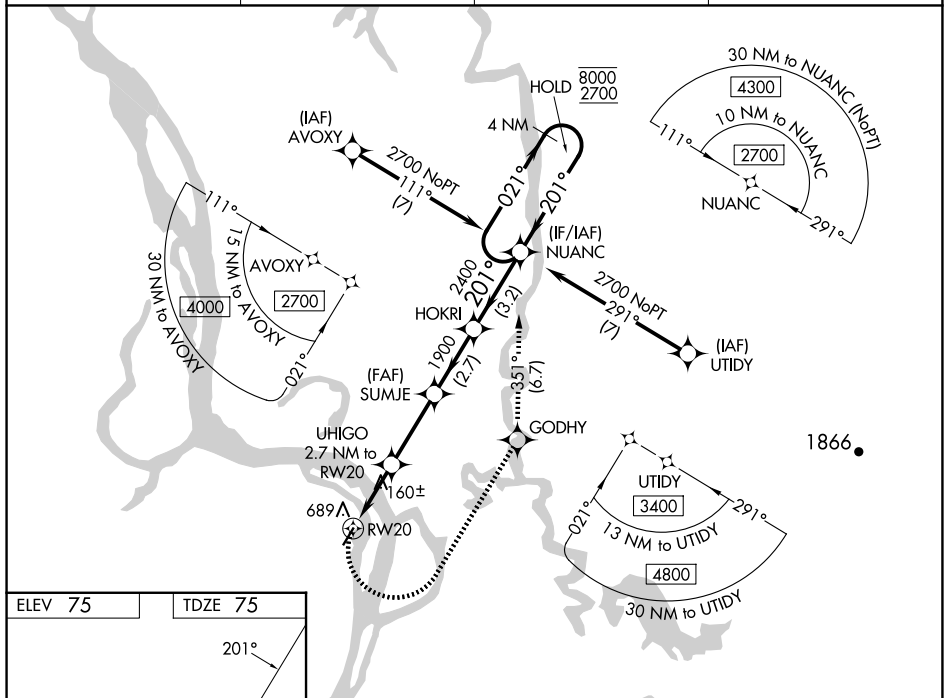
HOLY CROSS (HCA)(PAHC)

RNP APCH - GPS.

V Circling NA west of Rwy 2-20. Rwy 20 helicopter visibility reduction
A below 1 SM NA. When local altimeter setting not received, use Anvik
☼ altimeter setting and increase all MDAs 120 feet, LNAV all visibilities
-28°C ½ SM, LP visibilities Cats C and D ¾ SM, and Circling visibilities Cats
B, C, and D ½ SM. Straight-in and Circling Rwy 20 NA at night.

MISSED APPROACH: Climbing left turn to 2700 direct GODHY and on track 351° to NUANC and hold.

AWOS-3P 118.325	ANCHORAGE CENTER 118.15 251.05	KENAI RADIO 122.45	CTAF 122.8 ①
---------------------------	--	------------------------------	------------------------



MIRA Rwy 2-20

	2700 	GODHY 	tr 351°	NUANC 	SUMJE	HOKRI	NUANC	4 NM Holding Pattern
		RW20	UHIGO 2.7 NM to RW20	$\leq 3.00^\circ$ TCH 40	* 1900	201° 2400	021° 8000	← 201° 2700
CATEGORY	A		B		C		D	
LP MDA			420-1		345 (400-1)			
LNAV MDA	940-1 865 (900-1)		940-1¼ 865 (900-1¼)		940-2½ 865 (900-2½)			
CIRCLING	940-1¼ 865 (900-1¼)				940-2½ 865 (900-2½)		940-2¾ 865 (900-2¾)	