

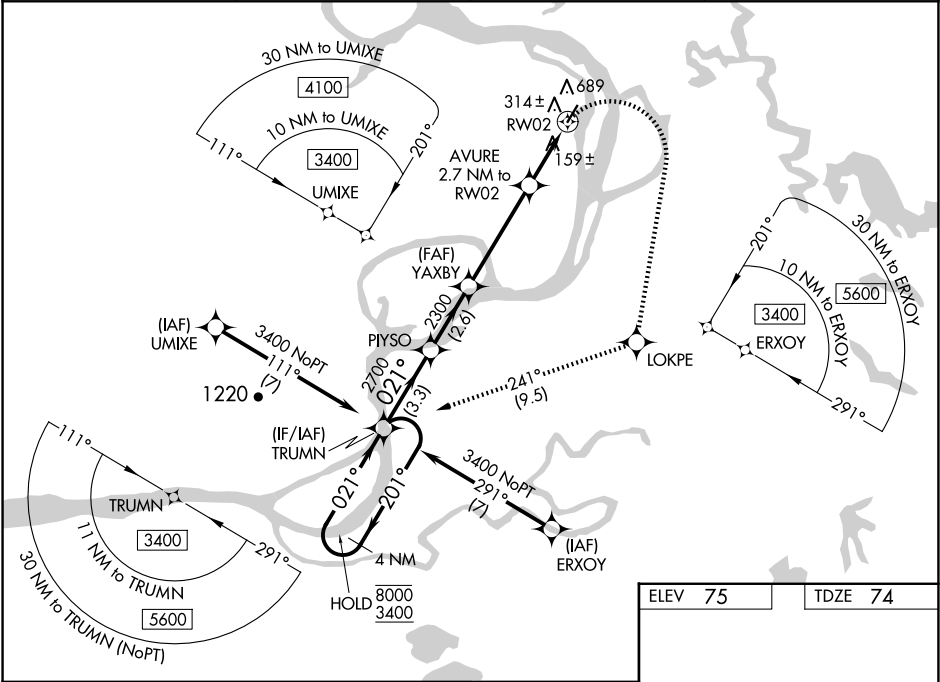
WAAS CH <b>57947</b> <b>W02A</b>	APP CRS <b>021°</b>	Rwy Idg TDZE <b>74</b> Apt Elev <b>75</b>
--	------------------------	---

RNAV (GPS) RWY 2

HOLY CROSS (HCA) (PAHC)

RNP APCH - GPS. ⚠️ -28°C	Circling Rwy 20 NA at night. Circling NA west of Rwy 2-20. Rwy 2 helicopter visibility reduction below ¾ SM NA. VDP NA when using Anvik altimeter setting. When local altimeter setting not received, use Anvik altimeter setting and increase all MDAs 120 feet and LNAV visibility Cat B, C and D ½ SM, and LP visibility Cat C and D ¾ SM, and Circling all visibilities ½ SM.	MISSED APPROACH: Climbing right turn to 3400 direct LOKPE and on track 241° to TRUMN and hold, continue climb-in-hold to 3400.
-----------------------------	---	--

AWOS-3P <b>118.325</b>	ANCHORAGE CENTER <b>118.15 251.05</b>	KENAI RADIO <b>122.45</b>	CTAF <b>122.8 0</b>
---------------------------	--	------------------------------	------------------------



CATEGORY	4 NM Holding Pattern		TRUMN	PIYSO	YAXBY	LOKPE	TRUMN
	8000 ← 201°		3400 → 021°	021°	2700	3400	tr 241°
	3.3 NM		2.6 NM	4.2 NM	1.3 NM	1.4 NM	
	2300		960	2700	3400	2300	
LP MDA	560-1	486 (500-1)	560-1 ¾ 486 (500-1 ¾)				
LNAV MDA	800-1	726 (800-1)	800-2 726 (800-2)				
CIRCLING	800-1	725 (800-1)	800-2 725 (800-2)	800-2 ¼ 725 (800-2 ¼)			

