

STIGLER, OKLAHOMA

AL-9467 (FAA)

24305

WAAS CH 65822 W17A	APP CRS 177°	Rwy Idg 4200 TDZE 599 Apt Elev 600
--	------------------------	---

RNAV (GPS) RWY 17
STIGLER RGNL (GZL)

RNP APCH.

T Rwy 17 helicopter visibility reduction below 1 SM NA.
Procedure NA at night.

MISSED APPROACH: Climb to 3900 direct ELKVI and hold, continue climb-in-hold to 3900.

AWOS-3PT 118.575	FORT WORTH CENTER 132.2 338.35	CTAF 122.90
----------------------------	--	-----------------------

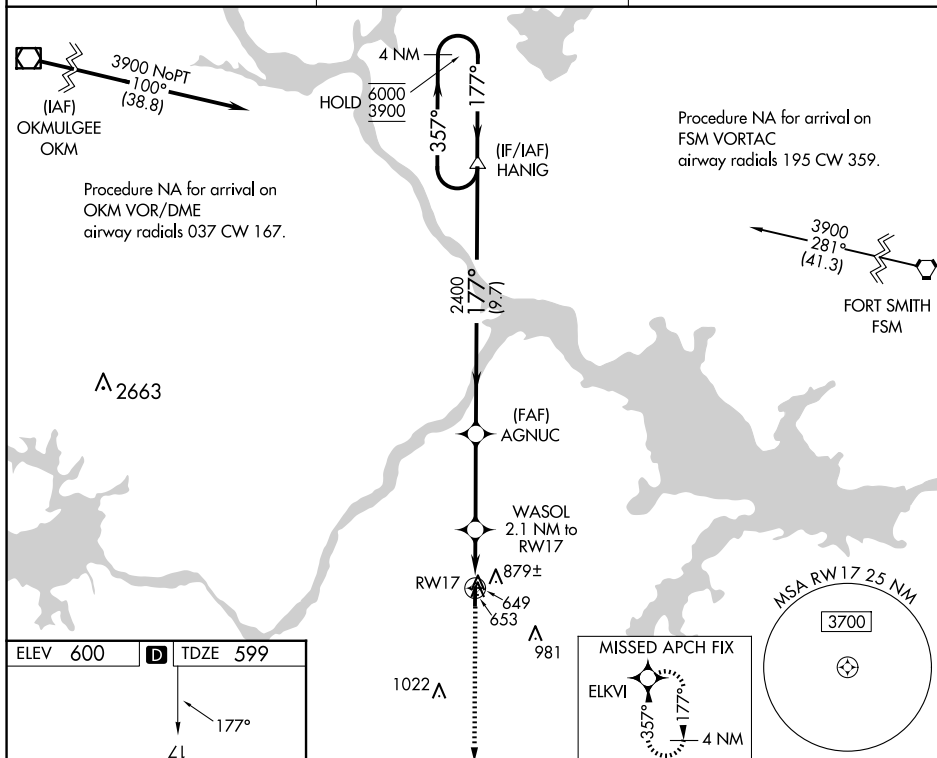


Diagram illustrating the MIRA 17-35 instrument approach chart. The chart shows a vertical runway (RW17) with a length of 4296 x 60 feet. A star symbol indicates the runway threshold. A 4 NM Holding Pattern is shown at the top right. The approach path is marked with distances: 2.1 NM from the runway to the first obstacle (WASOL), 3.4 NM to the second obstacle (AGNUC), and 9.7 NM to the third obstacle (HANIG). The approach path is labeled with 1300 and 2400. The final approach segment is labeled 357° and 3900. The chart also includes a 'Visual Segment - Obstacles' section with a 3900 foot obstacle and an ELKVI obstacle.

STIGLER, OKLAHOMA
Orig-B 03JAN19

35°17'N-95°06'W

STIGLER RGNL (GZL)
RNAV (GPS) RWY 17

SC-1, 10 JUL 2025 to 07 AUG 2025