

WAAS CH 93833 W35A	APP CRS 353°	Rwy Idg TDZE Apt Elev 3200 20 20
--	------------------------	--

RNAV (GPS) RWY 35

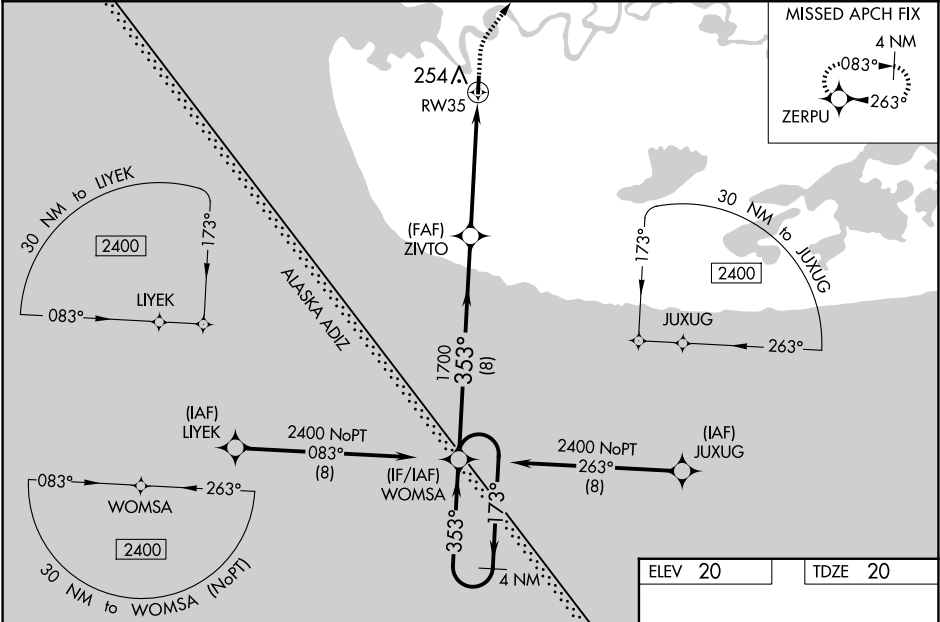
KIPNUK (IIK) (PAKI)

⚠

Baro-VNAV NA when using Toksook Bay altimeter setting. For uncompensated Baro-VNAV systems, LNAV/VNAV NA below -20°C (-4°F) or above 54°C (130°F). Helicopter visibility reduction below ¾ SM NA. DME/DME RNP-0.3 NA. Procedure NA at night. VDP NA when using Toksook Bay altimeter setting. When local altimeter setting is not received use Toksook Bay altimeter setting: increase LPV DA to 389 feet and visibility all Cats ¼ SM. Increase LNAV/VNAV DA to 465 and visibility all Cats ¾ SM. Increase all MDA 120 feet. Increase LNAV Cat C and D visibility to 1 ¼ SM, Circling Cat C to 2 SM, Cat D to 2 ¼ SM.

MISSED APPROACH: Climb to 500 then climbing right turn to 2400 direct ZERPU and hold.

AWOS-3P 118.325	ANCHORAGE CENTER 125.2 372.0	CTAF 122.7 0
---------------------------	--	------------------------



4 NM Holding Pattern

GP 3.00°
TCH 40

2400 ← 173°
353° →

353°

1700

8 NM

3.8 NM

1.4 NM

500

2400

ZERPU

* LNAV only

* 1.4 NM to RW35

RW35

3200 X 60

35

353° to RW35

MIRL Rwy 17-35 0

CATEGORY	A	B	C	D
LPV DA	270-1 250 (300-1)			
LNAV/VNAV DA	346-1 326 (400-1)			
LNAV MDA	520-1	500 (500-1)	520-1 500 (500-1)	500 (500-1)
CIRCLING	580-1	560 (600-1)	580-1 560 (600-1)	580-2 560 (600-2)

AK, 12 JUN 2025 to 07 AUG 2025

AK, 12 JUN 2025 to 07 AUG 2025