

WAAS
CH **87033**
W17A

APP CRS
173°

Rwy Idg
TDZE **20**
Apt Elev **20**

RNAV (GPS) RWY 17

KIPNUK (IIK) (PAKI)

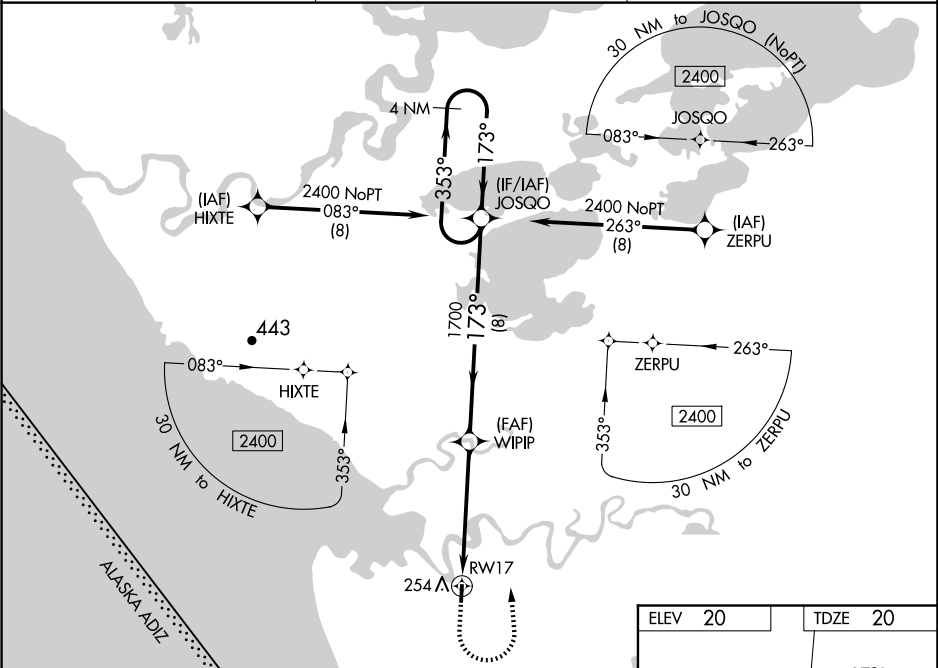
▼

▲

Baro-VNAV NA when using Toksook Bay altimeter setting. For uncompensated Baro-VNAV systems, LNAV/VNAV NA below -20°C (-4°F) or above 54°C (130°F). DME/DME RNP-0.3 NA. Procedure NA at night. VDP NA when using Toksook Bay altimeter setting. When local altimeter setting not received use Toksook Bay altimeter setting; increase LPV DA to 389 feet and visibility all Cats ¼ SM. Increase LNAV/VNAV DA to 553 feet and visibility all Cats ½ SM. Increase all MDA 120 feet. Increase LNAV Cat C and D visibility to 1¼ SM, Circling Cat C to 2 SM, Cat D to 2¼ SM.

MISSED APPROACH:
Climb to 500 then climbing left turn to 2400 direct JOSQO and hold.

AWOS-3P 118.325	ANCHORAGE CENTER 125.2 372.0	CTAF 122.7 0
---------------------------	--	------------------------



500

2400

JOSQO

*LNAV only

RW17

*1.4 NM to RW17

WIPIP

1700

353°

173°

1700

JOSQO

4 NM Holding Pattern

2400

GP 3.00°

TCH 40

1.4

3.8 NM

8 NM

CATEGORY	A	B	C	D
LPV DA	270-1 250 (300-1)			
LNAV/VNAV DA	434-1⅜ 414 (500-1⅜)			
LNAV MDA	520-1	500 (500-1)	520-1⅜	500 (500-1⅜)
CIRCLING	580-1	560 (600-1)	580-1½ 560 (600-1½)	580-2 560 (600-2)

ELEV 20

TDZE 20

173° to RW17

41

3200 X 40

35

MIRL Rwy 17-35 0