

WAAS
CH 77548
W11A

APP CRS
105°

Rwy Idg
TDZE
Apt Elev

3001
18
22

RNAV (GPS) RWY 11

SCAMMON BAY (SCM) (PACM)

RNP APCH - GPS.

▼

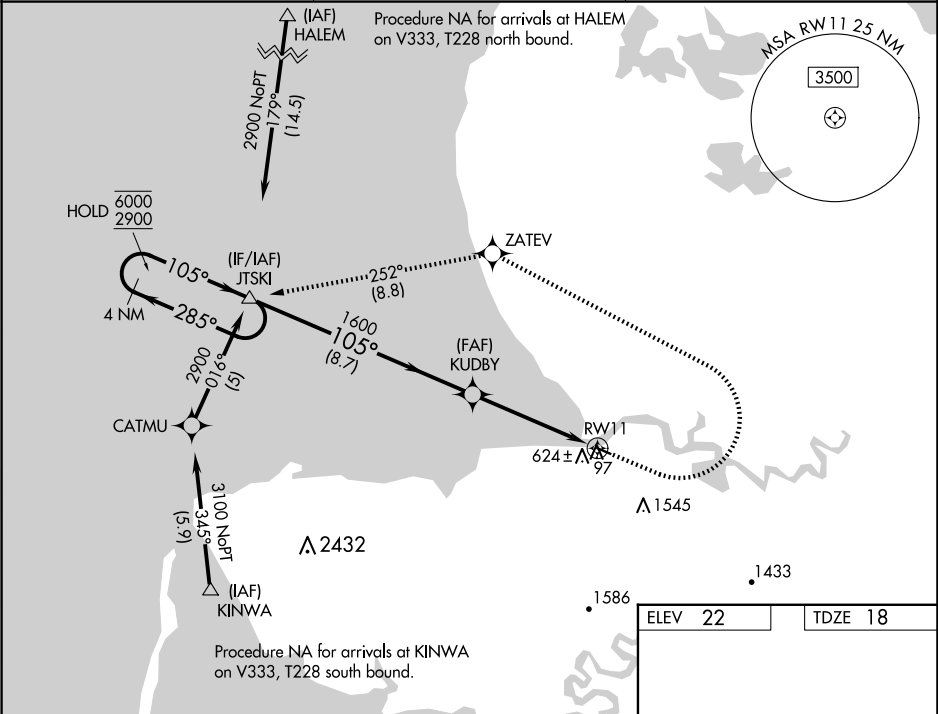
⚠

❄ -20°C

Circling NA south of Rwy 11-29. Circling Rwy 29 NA at night. VDP NA when using VAK/PAVA altimeter setting. When local altimeter setting not received, use VAK/PAVA altimeter setting and increase all MDAs 60 feet.

MISSED APPROACH: Climb to 440, then climbing left turn to 2900 direct ZATEV then on track 252° to JTSKI and hold.

AWOS-3P 118.425	ANCHORAGE CENTER 124.5	UNICOM 123.0 (CTAF) 0
--------------------	---------------------------	--------------------------



440

2900

ZATEV

tr 252°

JTSKI

4 NM Holding Pattern

JTSKI

KUDBY

1 NM to RWY 11

RWY 11

6000

2900

285°

105°

105°

1600

8.7 NM

3.8 NM

1 NM

CATEGORY	A	B	C	D
LP MDA	380-1	362 (400-1)	NA	NA
LNNAV MDA	1100-1¼ 1082 (1100-1¼)	1100-1½ 1082 (1100-1½)	NA	NA
CIRCLING	1100-1¼ 1078 (1100-1¼)	1100-1½ 1078 (1100-1½)	NA	NA

MRL Rwy 11-29 0